

# Sponsors of 2012 PHEE Annual Conference



# Academic Partnership

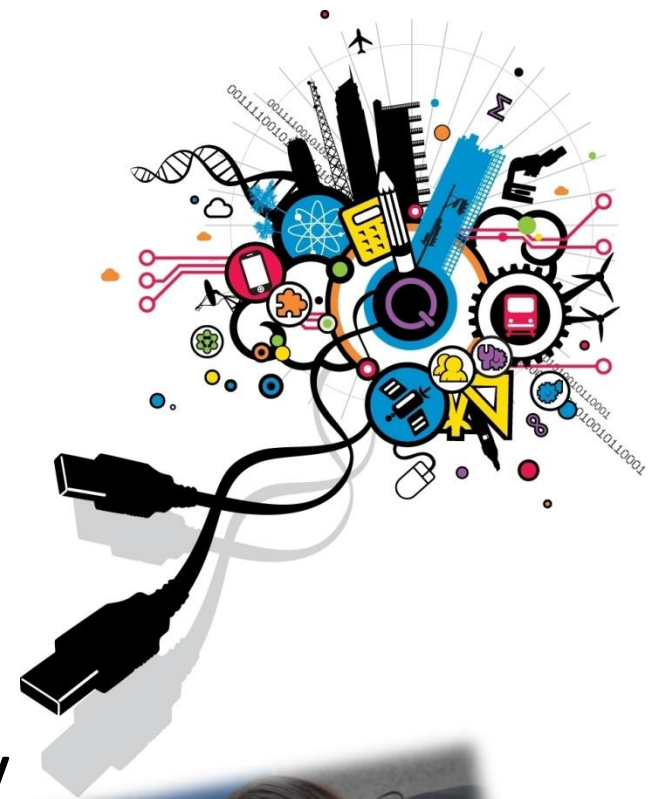
- Launched in 2009/10
- Enhancing existing activity
- Formal platform of engagement
- Departmental association.





# Schools outreach

- Faraday engineering challenge
- Hands-on experience for school pupils aged 12-13
- Opportunity to get involved by attending and assisting on the day.



# Assisting with Accreditation

- Ethics - a requirement of the UK Standard for Professional Engineering Competence (UK-SPEC) which must be addressed in IET accredited courses
- One-day course on *Integrating Ethics Teaching into the Engineering Curricula* exclusively for Academic Partners.



# Policy

- The IET represents the views of its members on a wide range of professional and technological issues
- Submissions are made each year to UK Government, UK Devolved Administrations, Parliamentary Committees, other agencies and the European Commission
- Academic Partners receive regular communications of UK Government Consultations
- Opportunity for IET Head of Policy visit.

# Networking opportunities

Rt Hon David Willetts MP at the IET

- Round table event involving senior industrialists and university vice chancellors
- Working to ensure that STEM degrees could better meet the needs of employers.



# Recognition through professional registration

- Chartered Engineer (CEng) for Academics
  - Demonstrating your commitment to professional standards
- Student technician registration
  - Industrial work experience
  - Improving graduate employability





# Graduate employability


## Graduate Advantage

- All the benefits of full membership at just £20
- access to career development resources
- IET Career Guide
- MIET designatory letters
- an IET student membership record to showcase your previous membership of the IET to prospective employers.




# Fellowship

- Fellowship of the IET is for individuals who have demonstrated sustained achievement in their profession
- Many senior academic staff may be eligible to apply for IET Fellowship
- Academic Partner pre-assessment.



Exceptional experience.  
Worthwhile recognition.

[www.theiet.org/fellow](http://www.theiet.org/fellow)



# Supporting students on campus

- Student membership
- Society sponsorship
- Careers fairs
- Conferences
- Presentations
- Students events.



# Partnership networking opportunities

- Academic Affiliates
  - India
  - China
- Corporate Partnerships.



# Thank you

Sally Davidson Jones

Academic Account Manager, The IET

M: +44 (0) 7725 498 135

E: [sdavidsonjones@theiet.org](mailto:sdavidsonjones@theiet.org)