

# Future funding opportunities

Lesley Thompson- Director Science and Engineering

Lesley.Thompson@epsrc.ac.uk



# Setting the context of our strategy

## The world is changing

- fast-moving landscape
- economic uncertainty
- global challenges
- 10 – 50 year time frame

**It has never been more important to work together to deliver a healthy, sustainable and prosperous future for the UK**

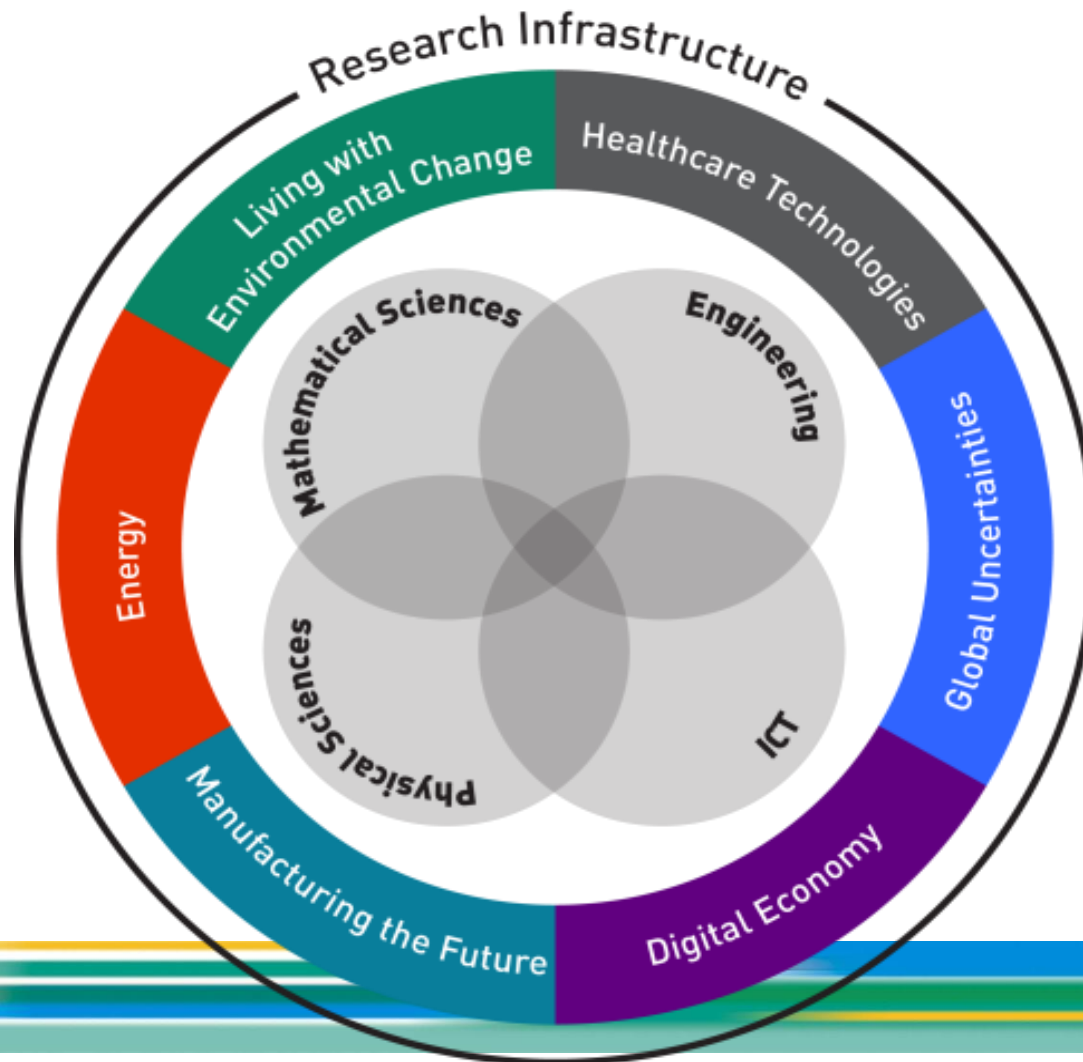
**EPSRC**

Pioneering research  
and skills

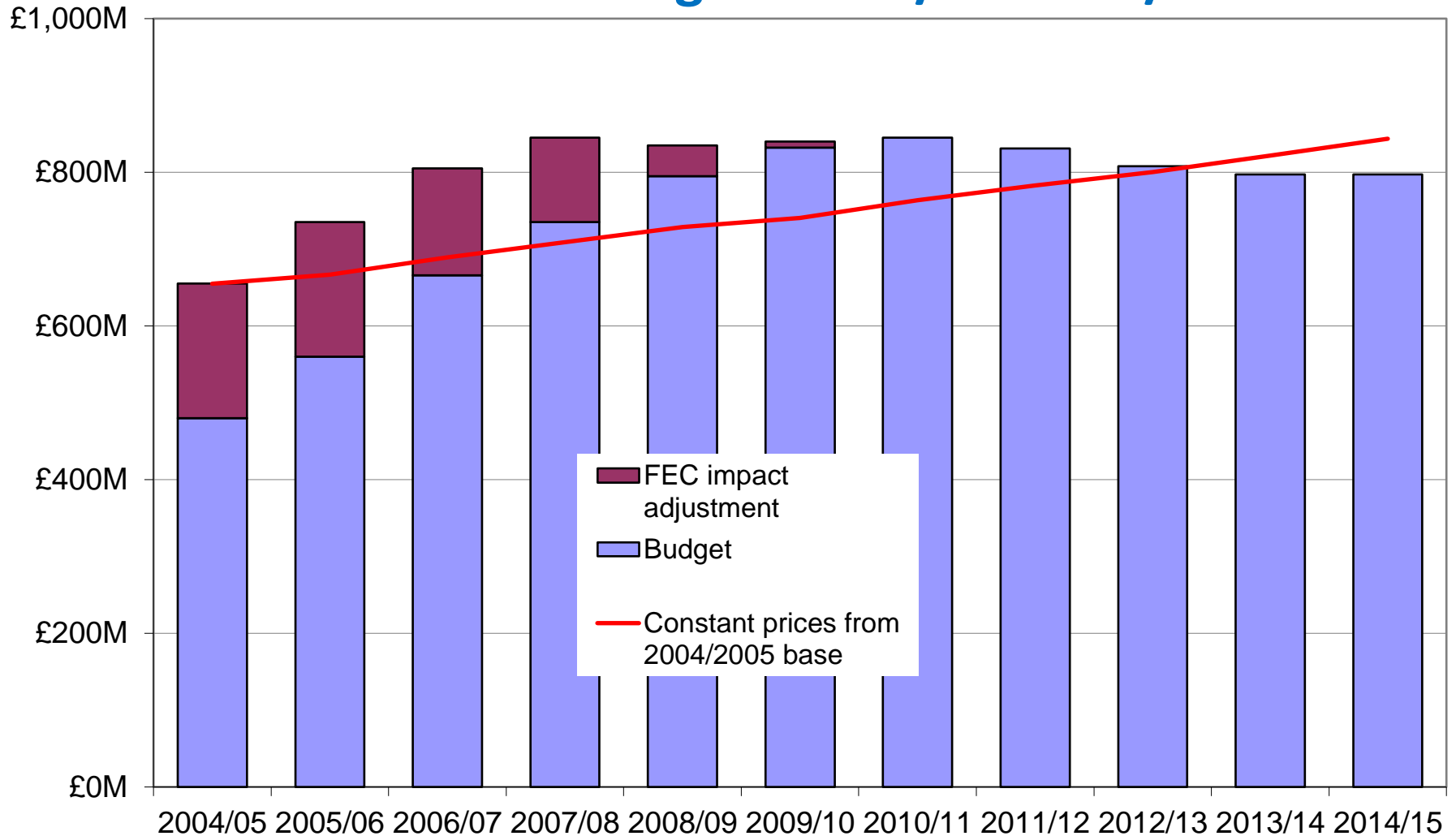
# What we do

- Act as a **sponsor** of research, ensuring our investments focus on outcomes for the UK good and working more proactively to partner with the researchers we support;
- Make strategic funding choices based on **excellence and national need**, shaping our portfolio in line with UK priorities and strengths;
- Provide our researchers with appropriate support and opportunities that fosters **creativity** and empowers them to undertake **ambitious** work;

# Research investments – wide opportunity space



# EPSRC Budgets 2004/05-2014/15



# Our three Strategic Plan goals

## Delivering Impact

- Embedding impact throughout our portfolio by creating an environment in which it arises naturally, in whatever form, from the knowledge base;

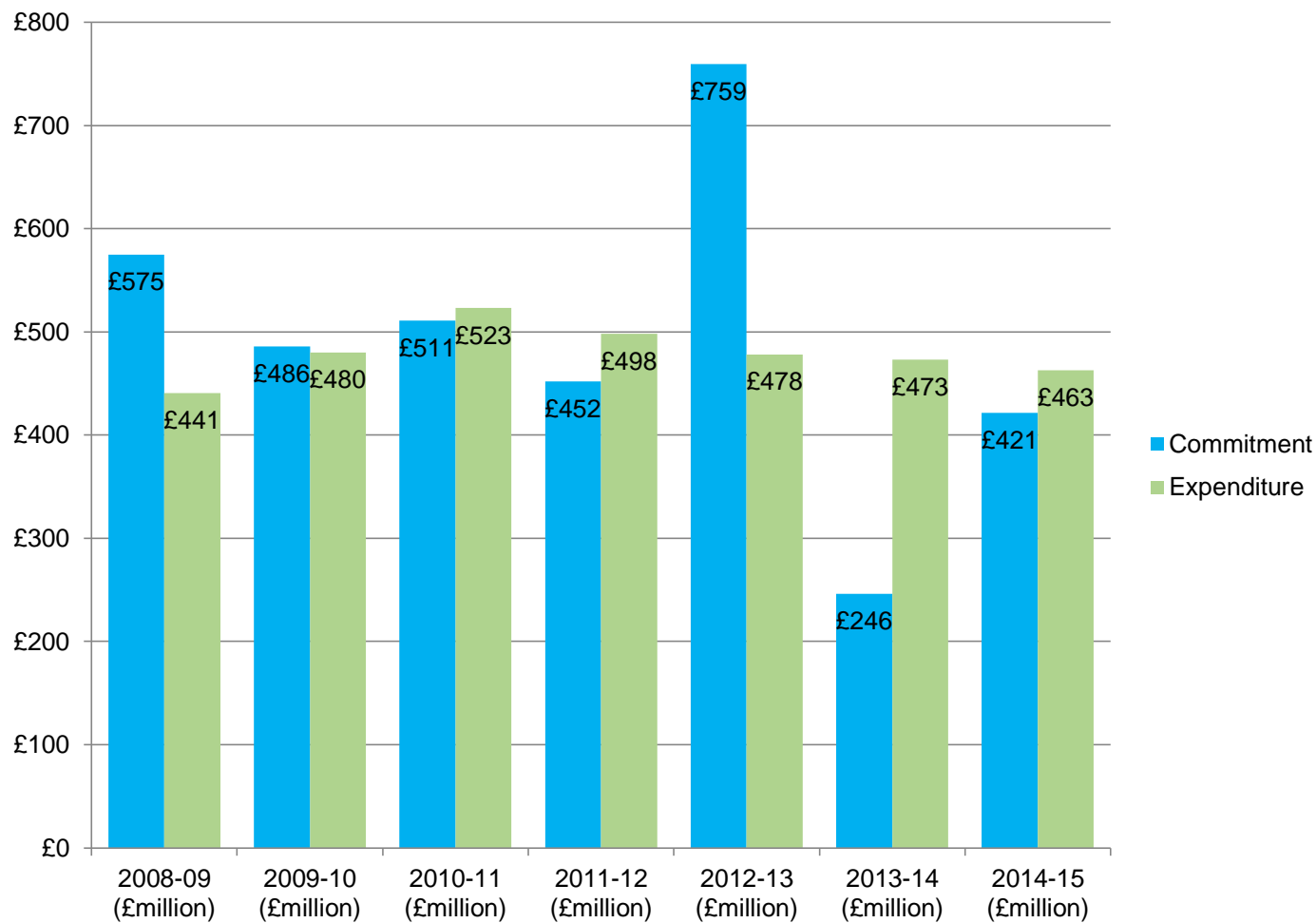
## Shaping Capability

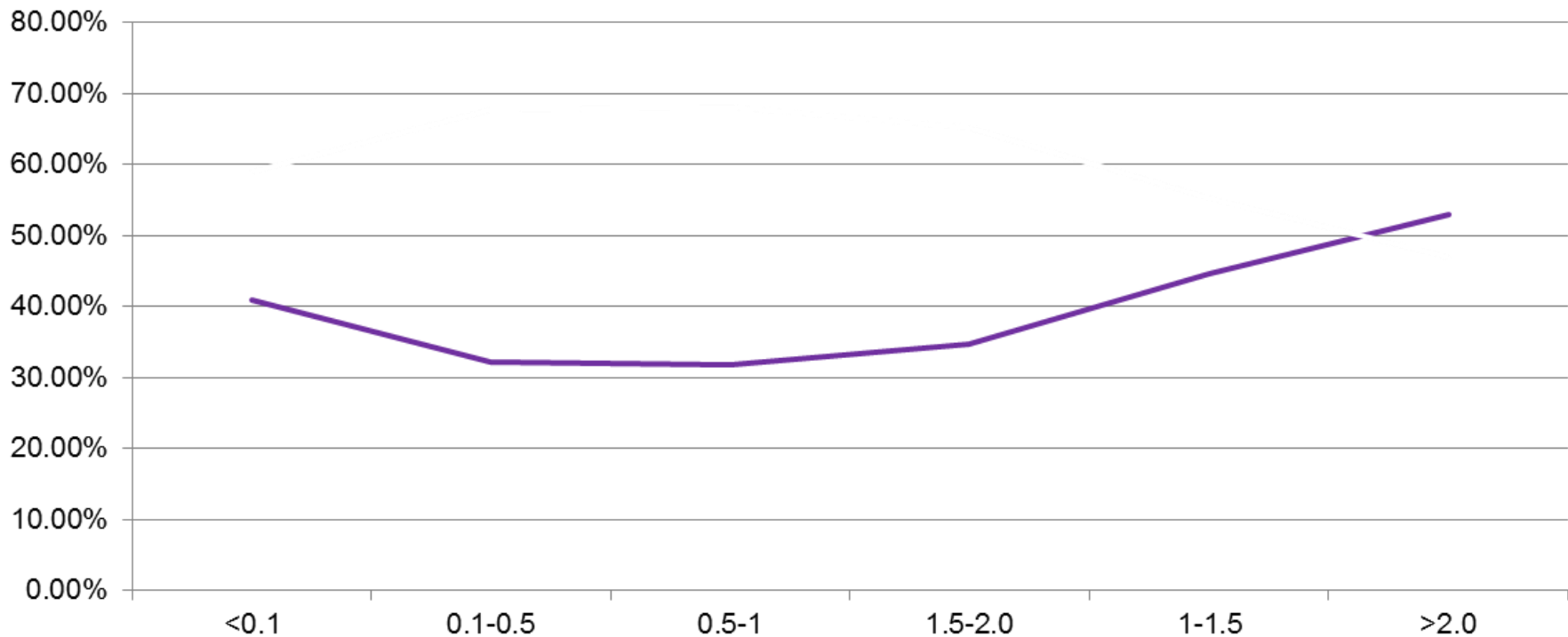
- Ensuring we have the right people, with the right resource, in the right places to deliver the highest quality long-term research in areas where the UK leads internationally and where there is current or future national need;

## Developing Leaders

- Nurturing the visionary leaders who set research agendas and inspirational team leaders who act as role models;

## Research Funding (£million)



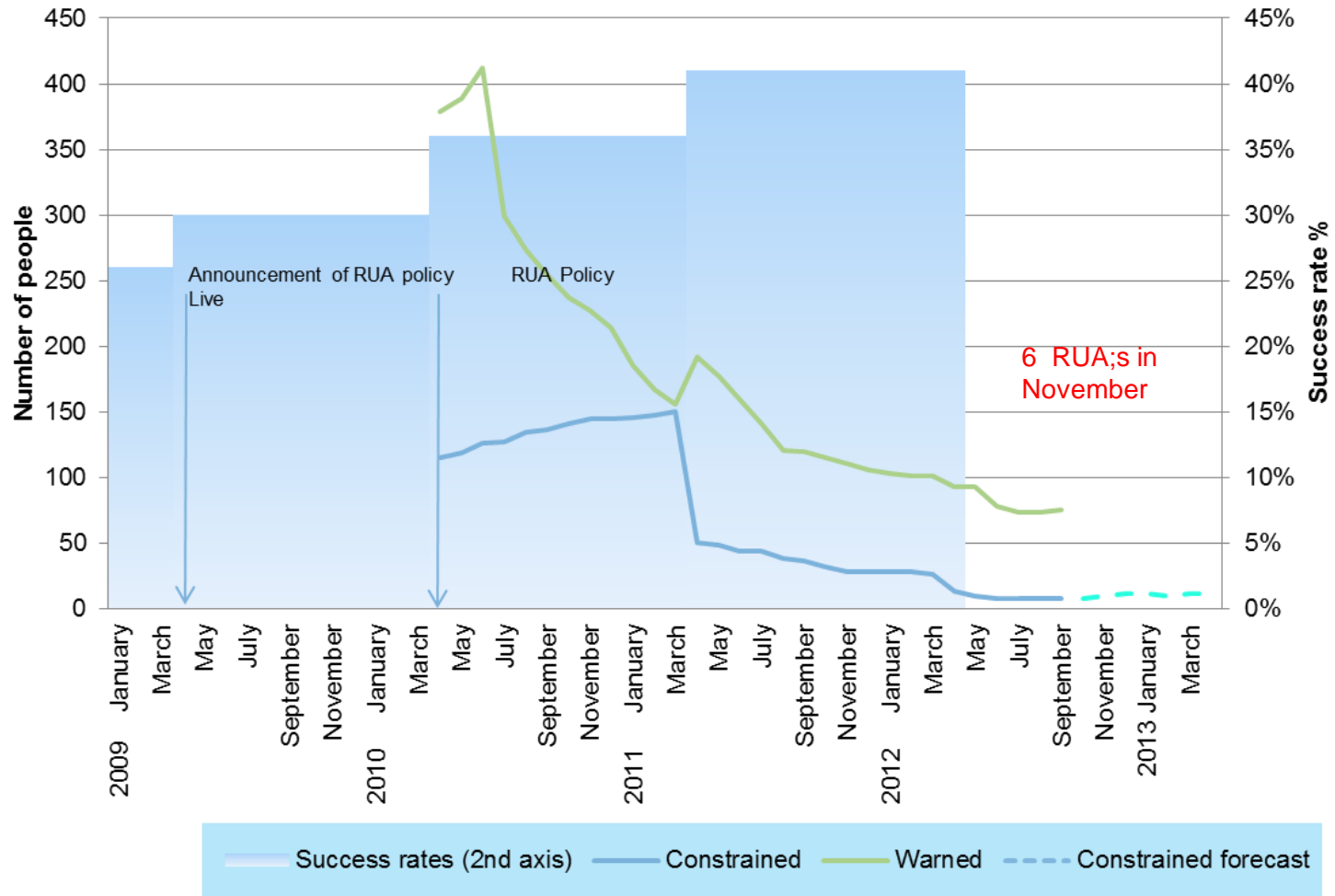


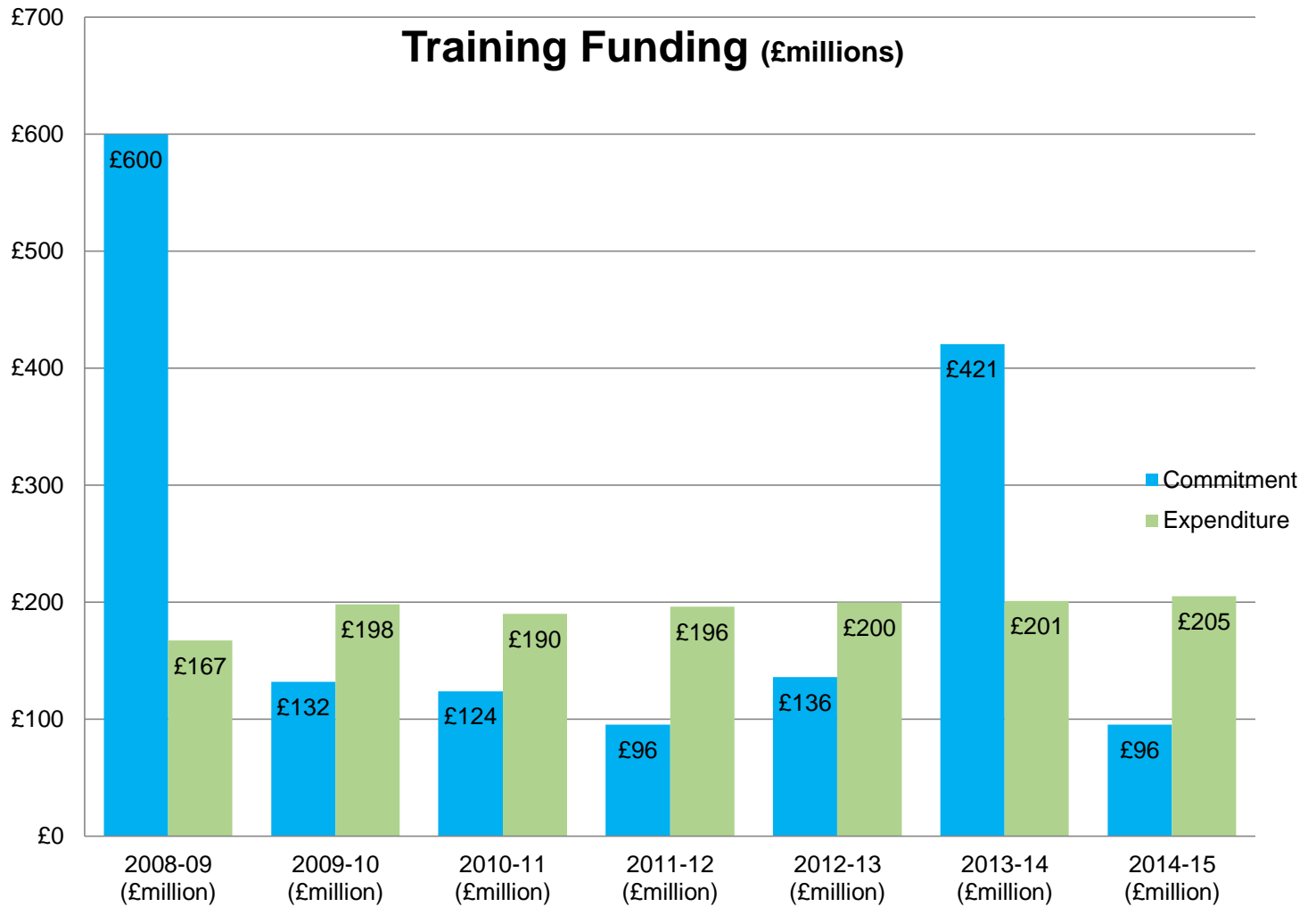
Success rates not value dependent. Higher for very small grants and very large grants





# Demand Management





# Developing a highly skilled work force

- We support ~ 10000 students (£200M p.a)– the largest single supporter in the UK (just under half of all students in EPS, and about ¼ of all PhDs)
- This gives EPSRC influence: what we do changes things
- 3 Main forms of support
  - DTG (£83.5M pa, 4559 students)
  - CDT (£69.8M pa, 2191 students) (Unmet need Innovation in provision )
  - ICASE (£17M pa, 723 Students) (User- directed)



# Developing Leaders

- Doctoral Prize- extended to 2 years added to DTG
- DTC/DTG-Council agreed current balance is about right
- DTC- Portfolio refresh-now
- Diversity- RCUK statement shortly
- Mentoring
- DTG- Longer allocation, entire CSR period?

# And along came capital

- Graphene September 2011- £50m
- E-infrastructure September 2011-£145m
- Mid range facilities- December 2011 -£25m including wind tunnels
- HEFCE partnership funding 2012 £300m
- 8 great technologies- Big Data, Energy efficient computing, Advanced Materials, Autonomous systems and robotics, Regenerative medicine, Synthetic biology, Energy storage, Agri-food Funding details to be announced shortly
  
- tb

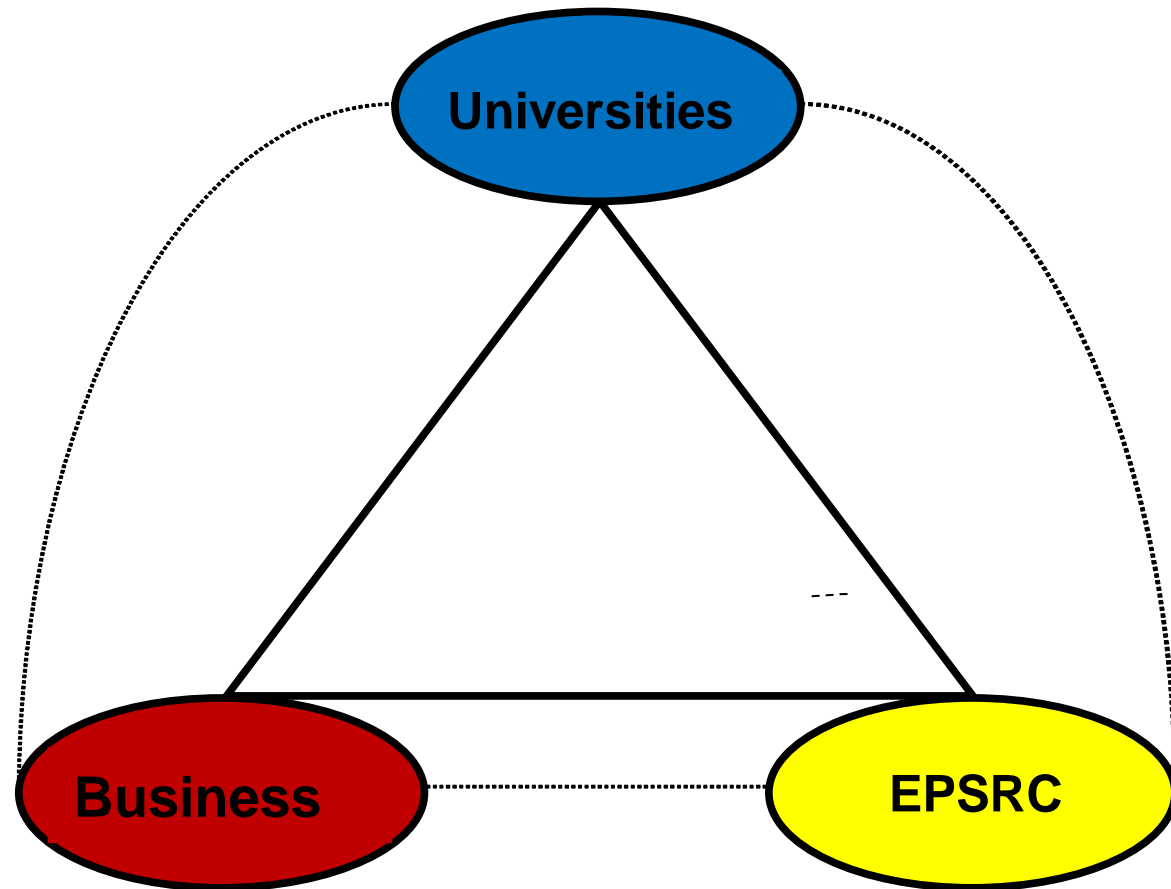


## So key foci for the coming period

- Eight great technologies
- Industrial strategy and role of EPS
- 2013 Engineering centre stage -RAEng a key partner
- CDT refresh-will absorb much effort but critical to the case for growth
- 2013- low grant commitment but then return to more stable situation
- Watching REF with caution- vulnerable subjects

**Its tough, but research is being seen as a corner stone of growth so its important we continue to support each other**

Excellence with impact **only** deliverable through partnership- including RCUK



# We aim to help researchers, industry and the UK!

[Lesley.thompson@epsrc.ac.uk](mailto:Lesley.thompson@epsrc.ac.uk)

Thank you for listening