



**PRESENTATION BY  
DR LESLEY THOMPSON, EPSRC  
AT PHEE ANNUAL CONFERENCE  
11 JANUARY 2012**

**EPSRC**

Pioneering research  
and skills

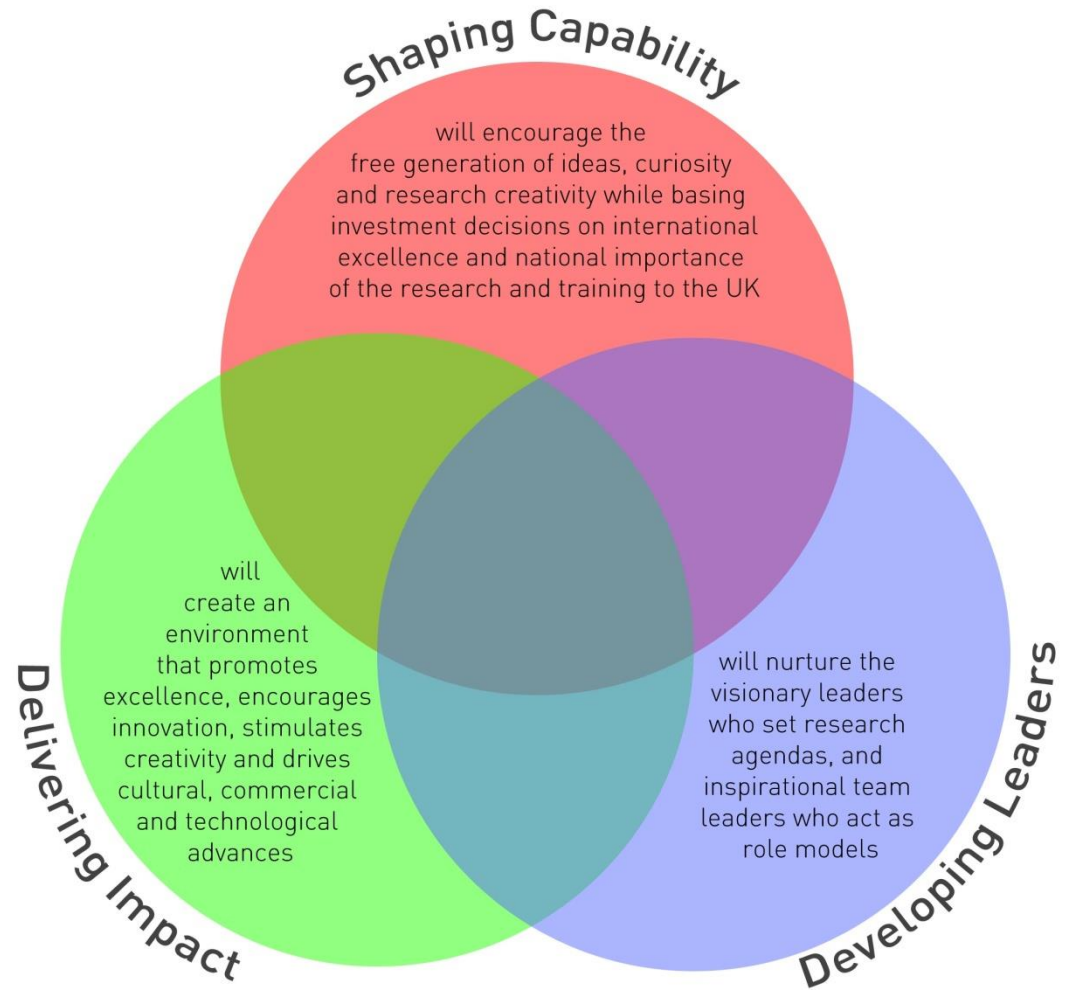
# STRATEGIC CONTEXT

## The world is changing

- fast-moving landscape
- economic uncertainty
- global challenges
- 10 - 50 year time frame

**It has never been more important to work together to deliver a healthy, sustainable and prosperous future for the UK**

# STRATEGIC PLAN GOALS



# EPSRC DELIVERY PLAN 2011 – 2015

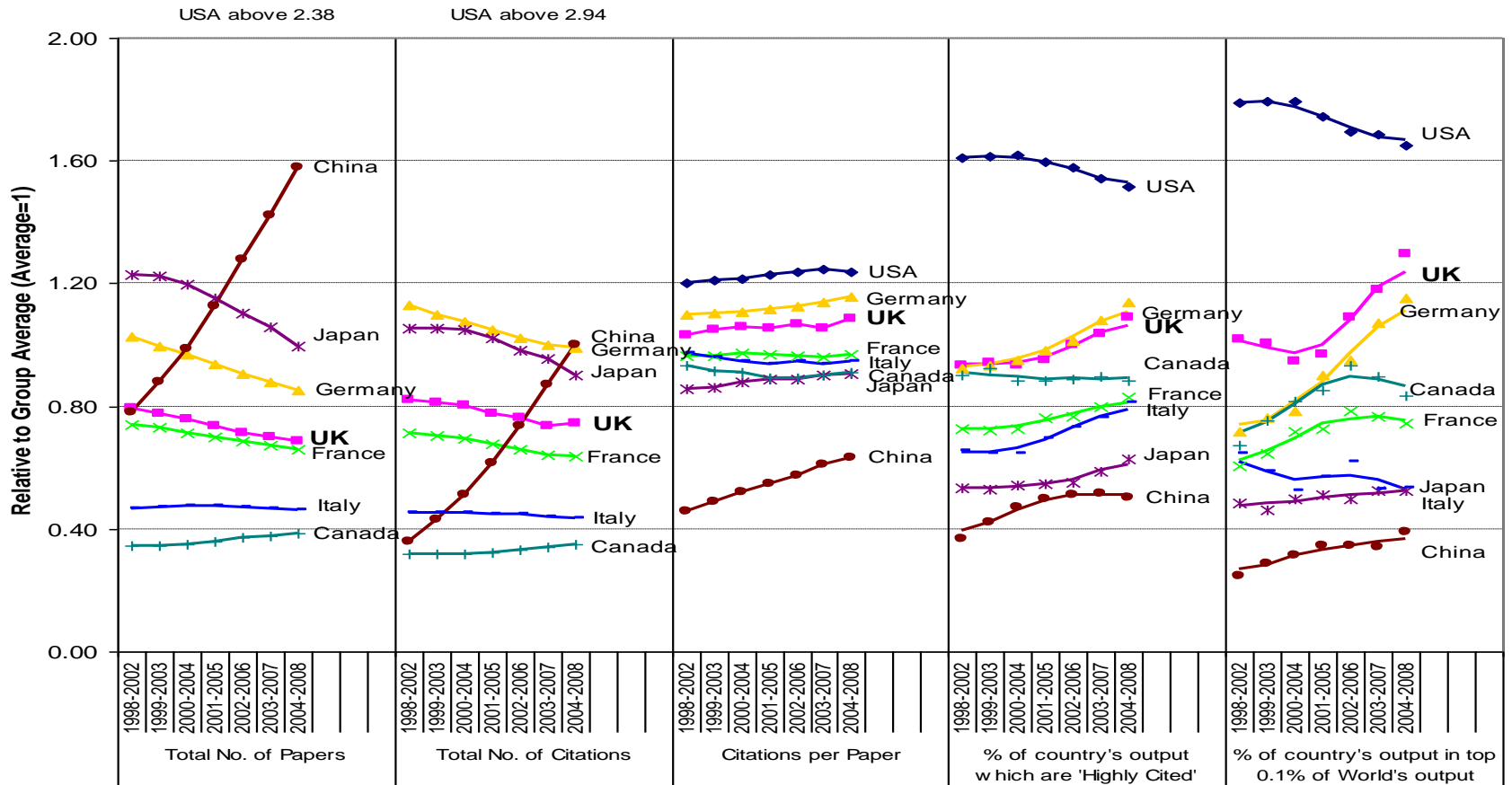
**Engineering and physical sciences are at the heart of the economy.**

**EPSRC is the only major dedicated national funder of long-term fundamental engineering and physical sciences research and training in the UK and remains absolutely committed to excellence and impact.**

**The research we sponsor will be driven by visionary leaders and will be both internationally excellent and deliver long-term impact for the health, prosperity and sustainability of the nation and the world.**

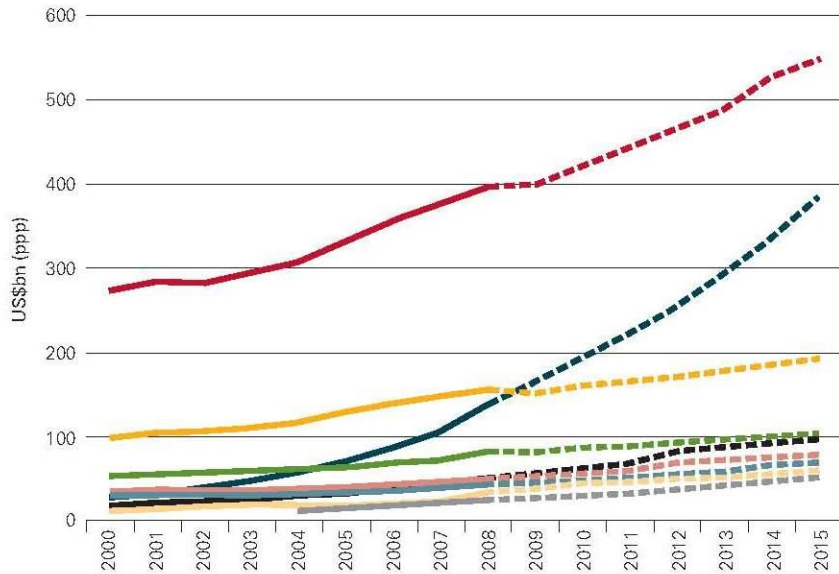
# WHY SHAPE?...EXCELLENCE – JULY 2009

## Overall Relative Rankings (1998-2008)

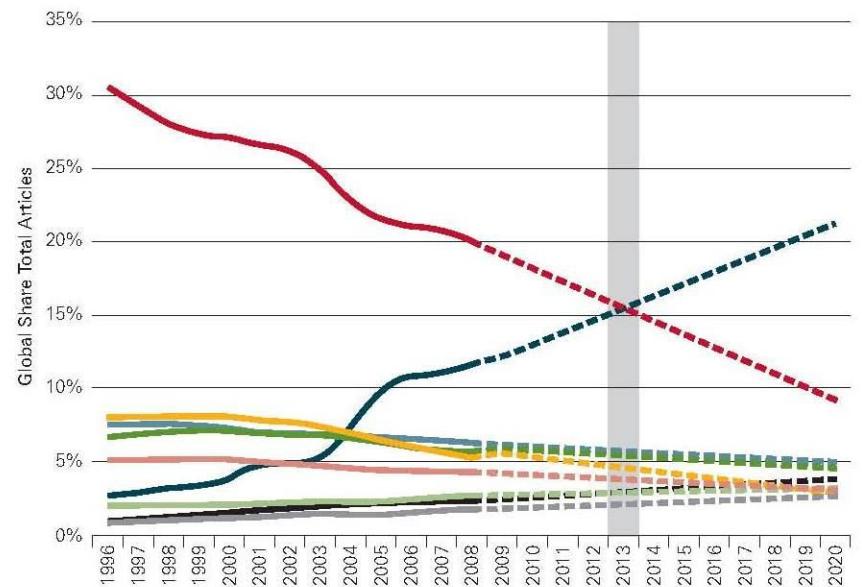


# WHY NOW? - THE SCIENTIFIC LANDSCAPE IN 2011

R&D Spending Selected Countries 2000 - 2015



Extrapolation of Future Publication Trends - 2020

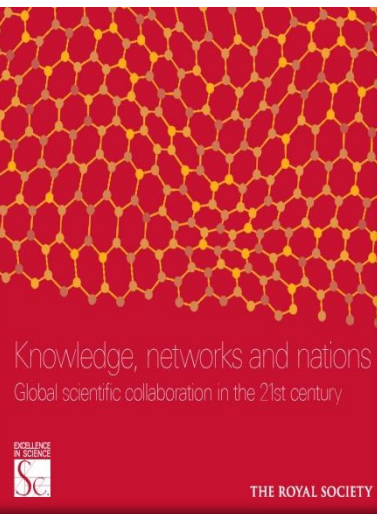


**Key**

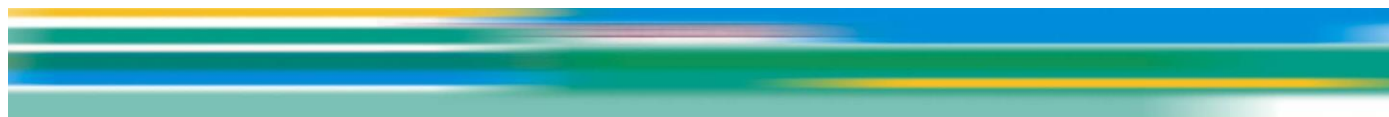
- United States
- China
- Japan
- Germany
- Korea, Republic of
- France
- United Kingdom
- Russia
- Brazil

**Key**

- China
- United States
- United Kingdom
- Germany
- Korea, Republic of
- India
- France
- Japan
- Brazil



# GOVERNMENT FUNDING OF RESEARCH - RELATIVE REAL TERMS GROWTH RATES



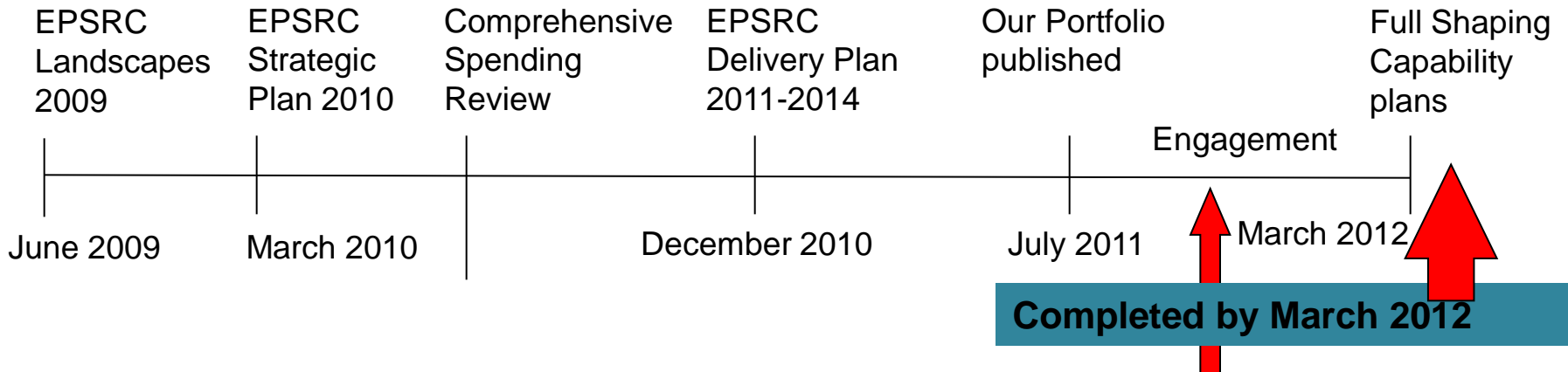
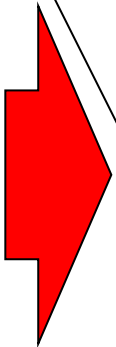
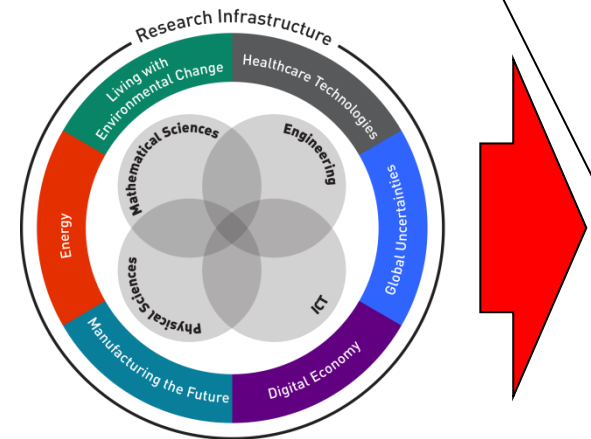
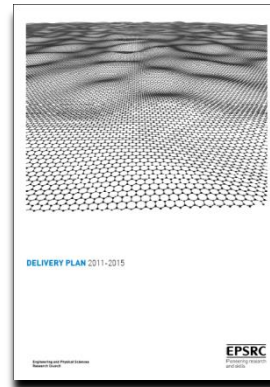
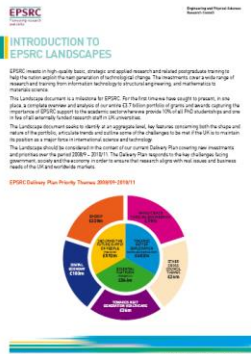
# SPENDING REVIEW ALLOCATION (2011/12 – 2014/15)

Resource	Capital	Admin
<b>“Flat cash” &amp; ring fenced</b>	<b>Overall reduction ~ 50%</b>	<b>Overall reduction ~ 34 % with inflation</b>
	<b>Yr 1 fixed, Yrs 2 – 4 indicative</b>	<b>Yr 1 fixed, Yrs 2 – 4 indicative</b>
<b>Total S &amp; R £18.3bn</b> <b>HEFCE £6.7bn</b> <b>RCs £10.4bn</b>	<b>Total S &amp; R £1.9bn</b>  <b>RCs £800m</b>	
<b>EPSRC £3bn</b> <b>(by end of CSR 3% cash reduction, 12% reduction with inflation)</b>	<b>EPSRC £116m</b> <b>(excludes HPC funding from LFCF)</b>	<b>EPSRC £62m</b> <b>(Near Cash)</b>



# WHERE HAVE WE REACHED...

**Peer Review  
Decision Making  
from April 2012**



# CONCEPTUALLY SHAPING IS...



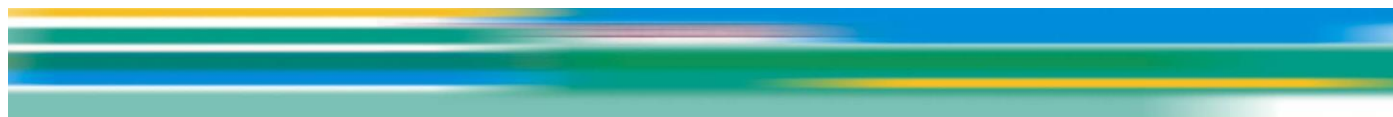
Current landscape

Where we are heading

**HOW TO GET FROM A TO B?  
WHAT DOES B LOOK LIKE?**

Landscape “B” must:

- meet the long term needs of users and facilitate future economic growth for the UK
- be resilient and retain the ability to respond to new challenges and opportunities
- ensure continuing excellence with impact



- Our portfolio
- Our approach
- Shaping our portfolio
- Making decisions
- Investing in our portfolio
- Themes
- Interfaces
- Research areas

Home > Our portfolio

**Our portfolio**

EPSRC supports the UK's research and innovation

- The research areas
- Development
- How we fund
- How we work

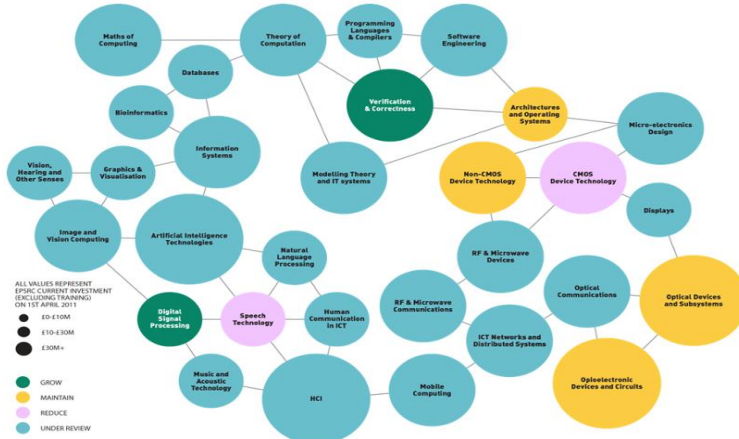
- Our portfolio
- Themes
- Digital economy
- Energy
- Engineering
- Global uncertainties
- Healthcare technologies
- Information and communication technologies (ICT)
- Introduction
- Strategy
- Our approach
- Contacts
- News and events
- Publications and reports
- Case studies
- Living with environmental change
- Manufacturing the future
- Mathematics
- Physical sciences
- Research infrastructure

Home > Our portfolio > Themes > Information and communication technologies (ICT)

**Information and communication technologies (ICT)**

The vision for ICT capability is to support UK scientists to deliver the very best research and training to meet the future scientific needs across the science base. This needs to be set in the context of the national provision and also how the UK competes in these areas internationally.

To deliver this aspiration and ensure that we will provide the flow of people needed to sustain capability at all career stages in areas of strategic importance we have mapped the whole portfolio and highlighted those areas with strategies where we wish to encourage a shift in the current levels of investment. The following landscape graphic is deliberately set at the research area level to reflect back to the community the competing investments.



Please select an area of the image to navigate to a research area

Note: Circles represent the total value of EPSRC's investment (excluding training) in the research area on 01 April 2011.

We still aim to fund research across the ICT spectrum but in reduce areas this will be on an increased competitive basis. In areas of growth, proposals will still be subject to rigorous peer review to ensure only excellent science is supported.

Information at theme level is available in the Introduction and Strategy, with further information at research area level available by selecting the relevant circle in the graphic.

All values represent EPSRC investment (excluding training) in research areas on 01 April 2011. Figures will be updated on 1st April 2012.

- Introduction
- Strategy
- Our approach
- Contacts
- News and events
- Publications and reports
- Case studies

Contact: **Liam Blackwell**

Note: The

competitiveness of £2-3billion.

# HOW DOES THIS RELATE TO MY RESEARCH PROJECT?

Leading  
Evaluation &  
Benchmarking

**PORTFOLIO SHAPE**  
(OUR PORTFOLIO PUBLICATION)

Comment and feedback  
on portfolio shape

Participation and  
discussion  
capability level – GROW /  
MAINTAIN / REDUCE)

**PORTFOLIO  
OUTCOMES**

**RESEARCH  
TRAJECTORIES**

Participation in project  
level Peer Review

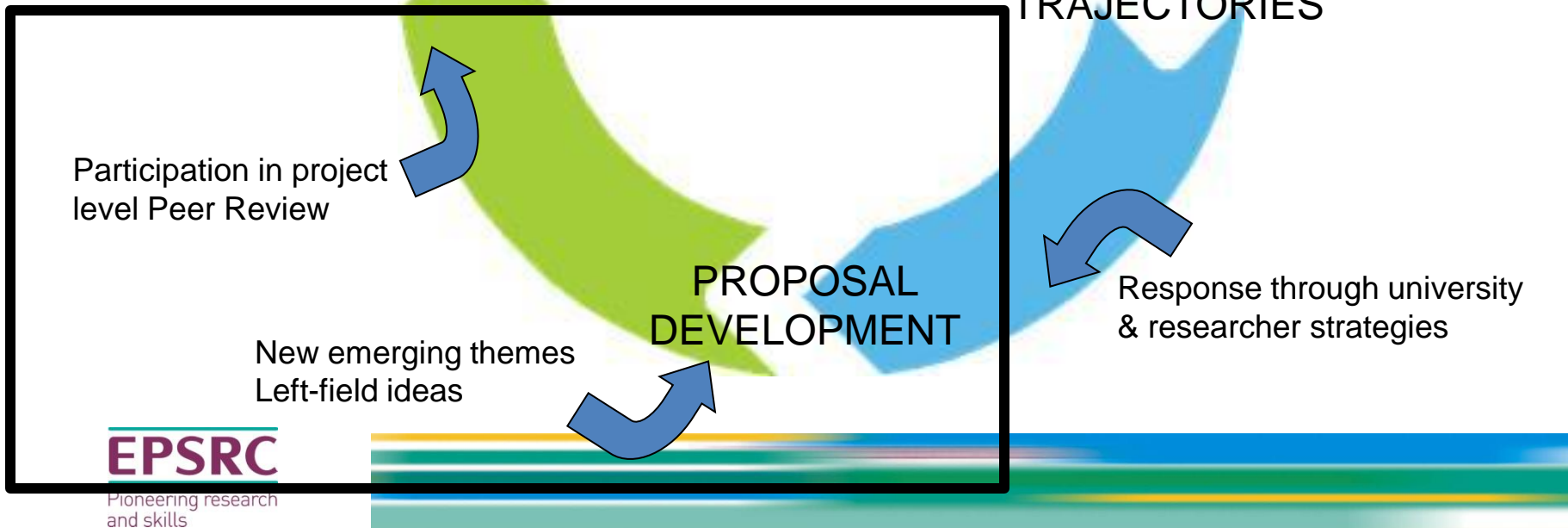
**PROPOSAL  
DEVELOPMENT**

Response through university  
& researcher strategies

New emerging themes  
Left-field ideas

**EPSRC**

Pioneering research  
and skills



# WHAT DOES ALL THIS MEAN FOR PEER REVIEW?

- Peer review is central to achieving the strategic goals
- Adapting current processes, phasing some changes over the next six months
- Main changes
  - Capital Equipment
  - National Importance as an assessment criterion
  - Fit to the EPSRC portfolio - New panel process from October 2012
- Peer review principles remain unchanged



# FINALLY...

## Planned New Commitment – Delivery Plan 2011/12 – 2014/15

