

UK-SPEC

*ROLL-OUT, DEVELOPMENTS &
ISSUES*

Prof Kel Fidler

UK-SPEC

- United Kingdom Standard for Professional Engineering Competence
- Arose from review of SARTOR'97 (aka SARTOR3) that commenced in Autumn 2002
- UK-SPEC launched in December 2003
- Took effect in March 2004

UK-SPEC

- Majors on Competence
- Three phases:
 - Educational Base
 - Initial Professional Development
 - Professional Review
- Flexibility
 - Technical Report Route

UK-SPEC

- Three categories:
 - Engineering Technician
 - Incorporated Engineer
 - Chartered Engineer
- Ladders & Bridges
- Competence is the watchword

UK-SPEC

- No artificial input standards
- No confusing ‘Matching Sections’
- Clear and Concise Guidance
- Flexibility for non-standard applicants
- Seek to encourage, not restrict

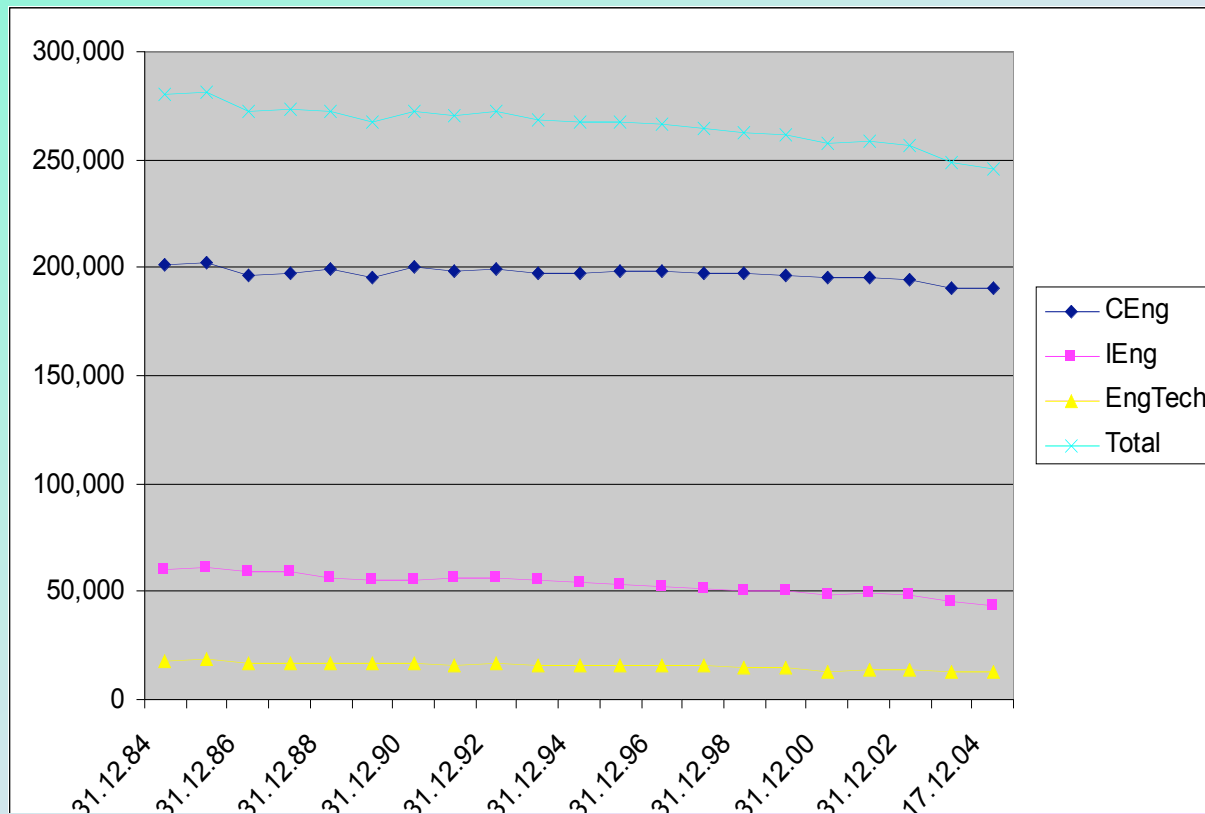
UK-SPEC

- EC^{uk} activity:
 - Registration Standards
 - Re-registration - revalidation
 - Quality
 - International
 - DABCE support

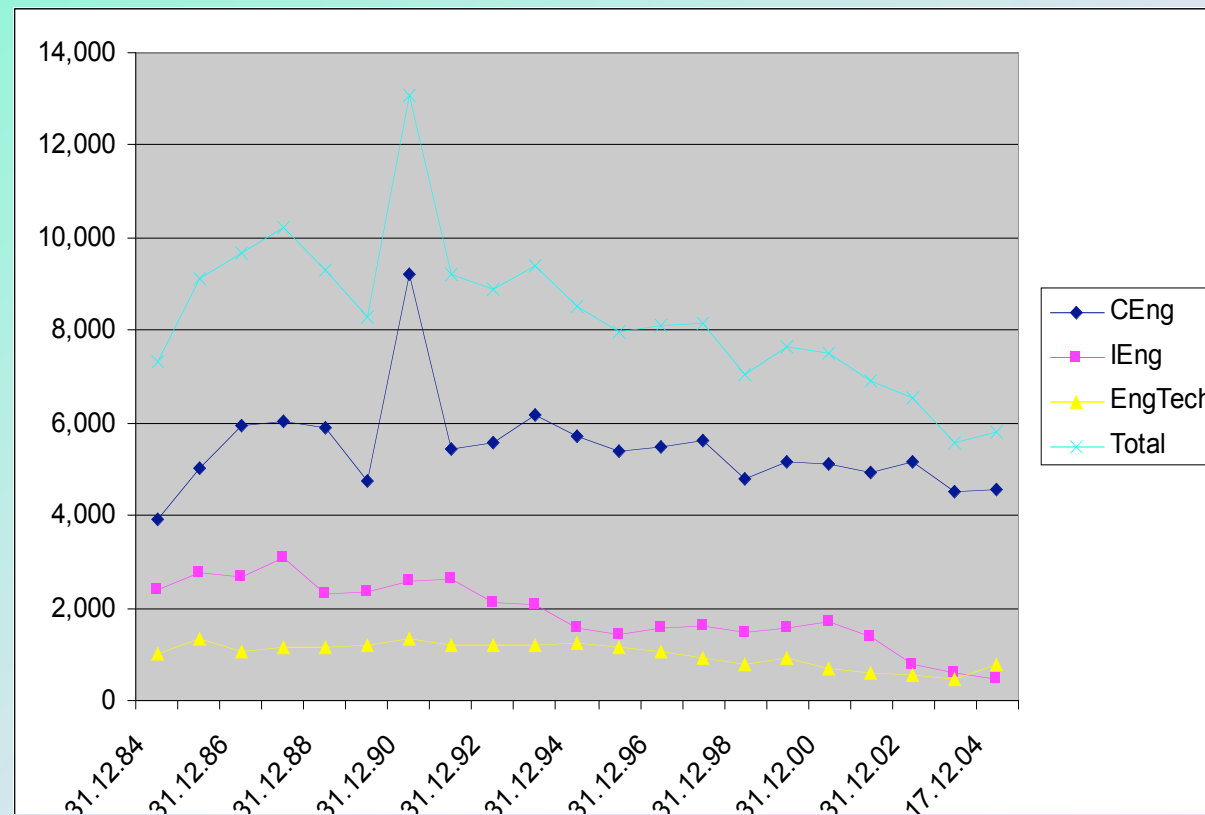
UK-SPEC

- UK-SPEC generic Output Standards
- QAA Benchmark Statements in Engineering
- Interpretation by PEIs
- Guidance documents
 - Registration (for PEIs)
 - Accreditation (for PEIs)
 - Accreditation (for HEIs)

Total Registration Numbers



New Final/Stage 3 Registrants



UK-SPEC

- Issues:
 - Recruitment
 - Funding for Engineering Education
 - Registration
 - Bologna
 - International accords