



Future funding of strategically important and vulnerable subjects and Masters programmes

Lis Edwards, Senior Higher Education Policy Adviser

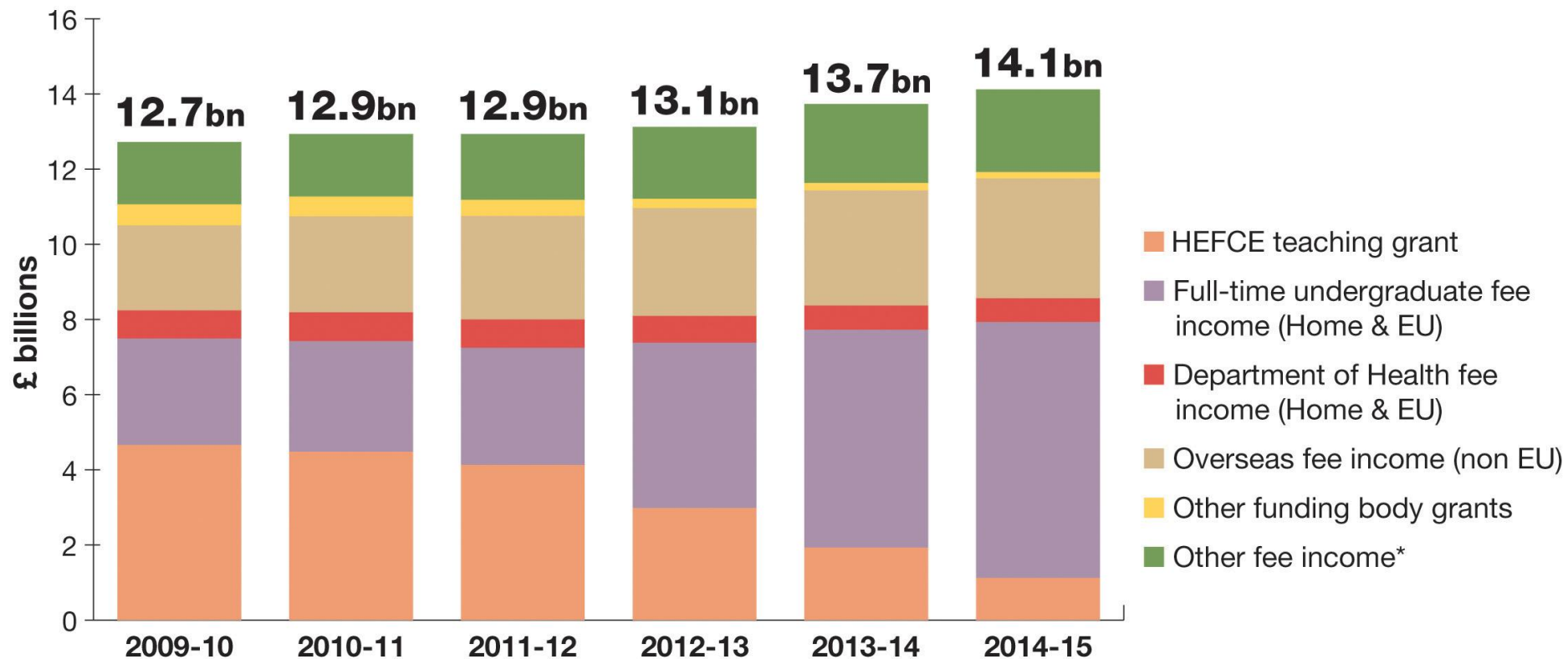
Engineering Professors' Council Congress

17 April, 2013

Summary

- Context of new fee and funding arrangements
- Impact of reforms
- HEFCE's SIVS policy and interventions
- Data on engineering numbers
- HEFCE's work on PG
- Future challenges

Breakdown of teaching related income from 2009-10 to 2014-15



Key policy themes

- A more diverse, dynamic and open system of undergraduate education
- A continuing focus on fair access and widening participation
- A commitment to invest in postgraduate education
- Sustained funding for science and research in cash terms (including charity and business support) and investment in the next generation of researchers
- A willingness to review progress and deal with the unintended consequences of change



Is recruitment affected?

Which subjects are more popular?

Are postgraduates affected?

What about part-time study?

What about disadvantaged students?

How are universities and colleges responding?

People from the UK and EU beginning a full-time higher education course in England

2013-14



???,??? Data on number of entrants will be available in December 2013



455,081 UCAS applicants

2012-13



351,000 Full-time undergraduate entrants



441,791 UCAS applicants

2011-12



398,000 Full-time undergraduate entrants



491,387 UCAS applicants

2010-11



384,000 Full-time undergraduate entrants



480,979 UCAS applicants

2009-10



389,000 Full-time undergraduate entrants



???,??? UCAS data not comparable

2008-09

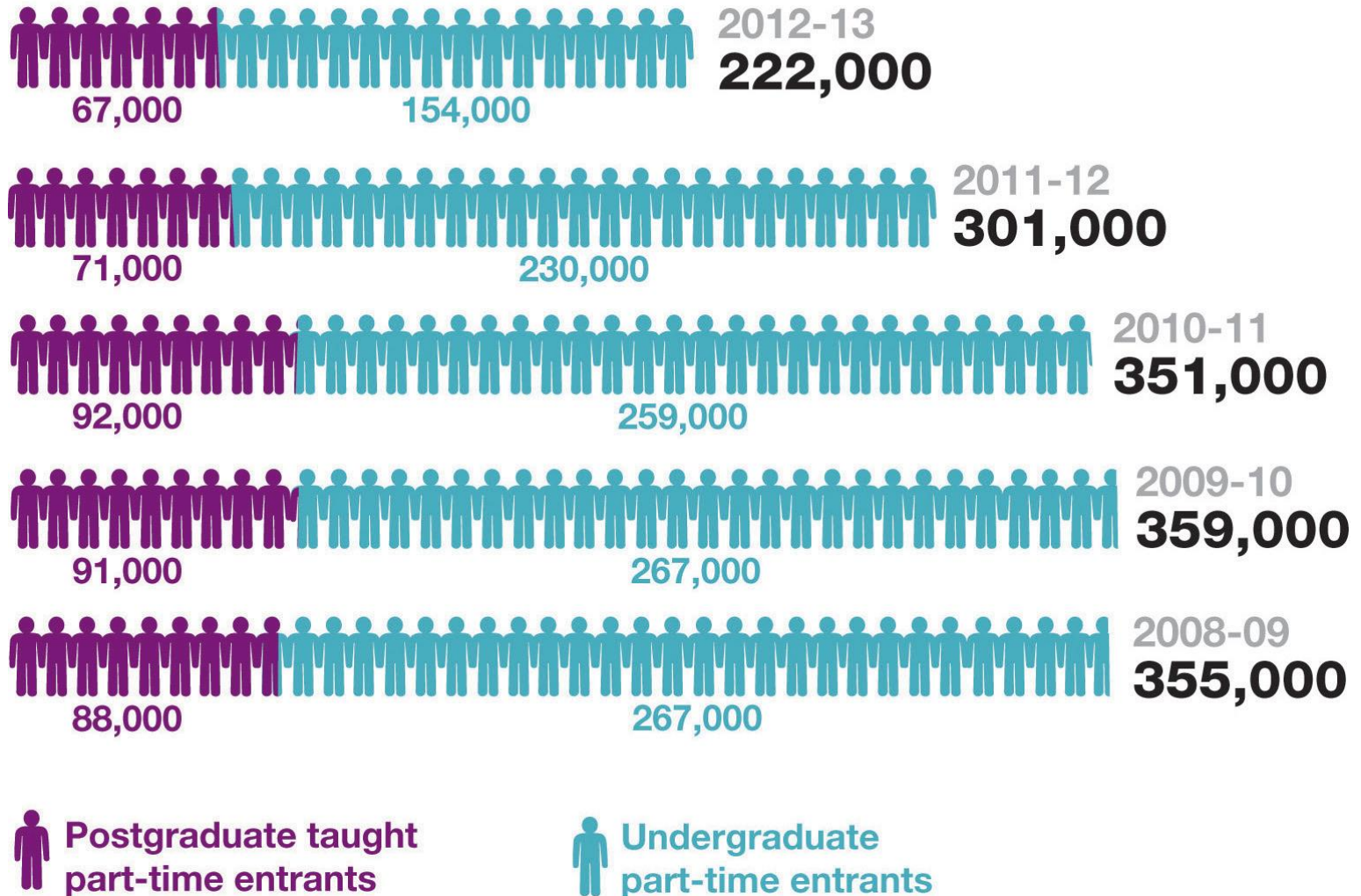


375,000 Full-time undergraduate entrants

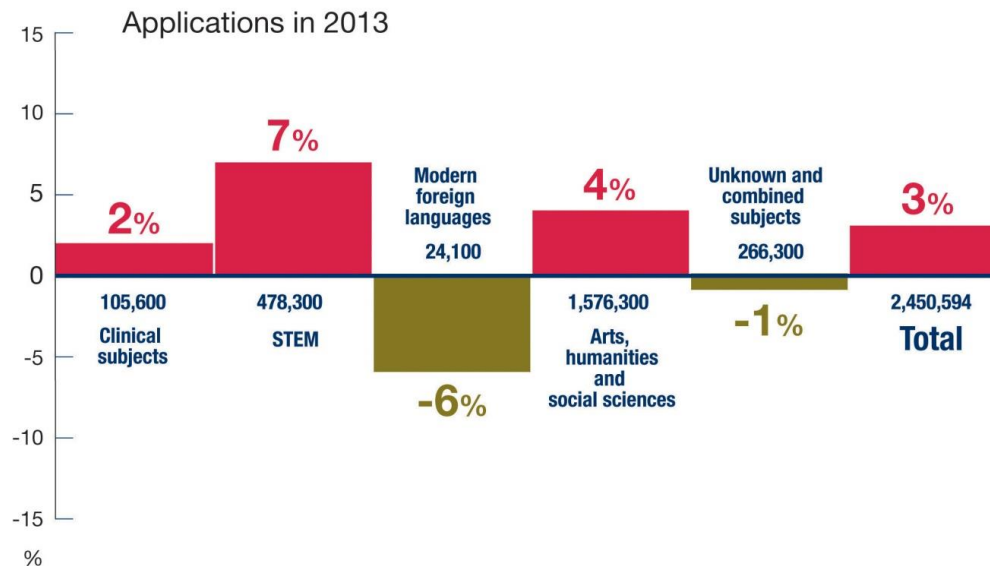
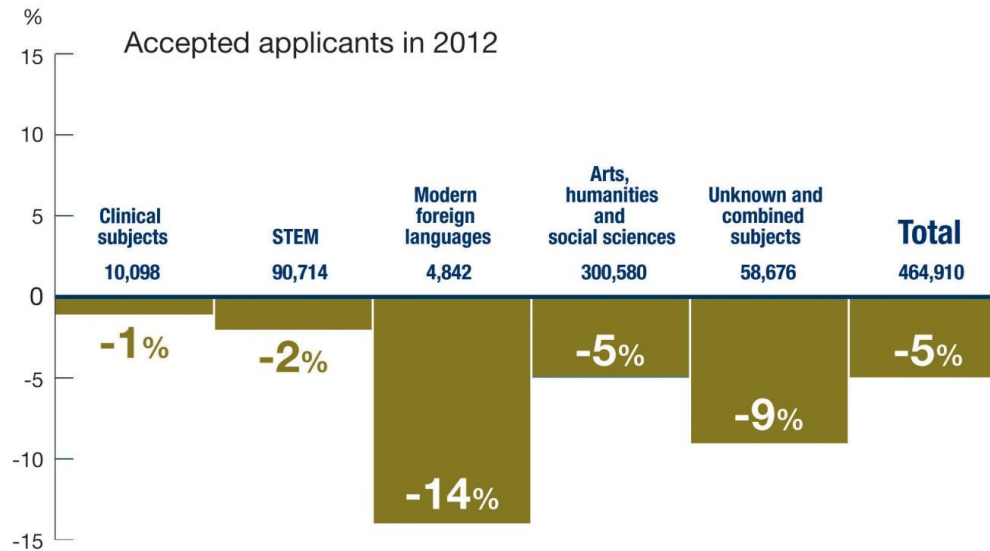


???,??? UCAS data not comparable

People beginning a part-time higher education course in England



Accepted applicants (via UCAS) by subject group



New approach to SIVS



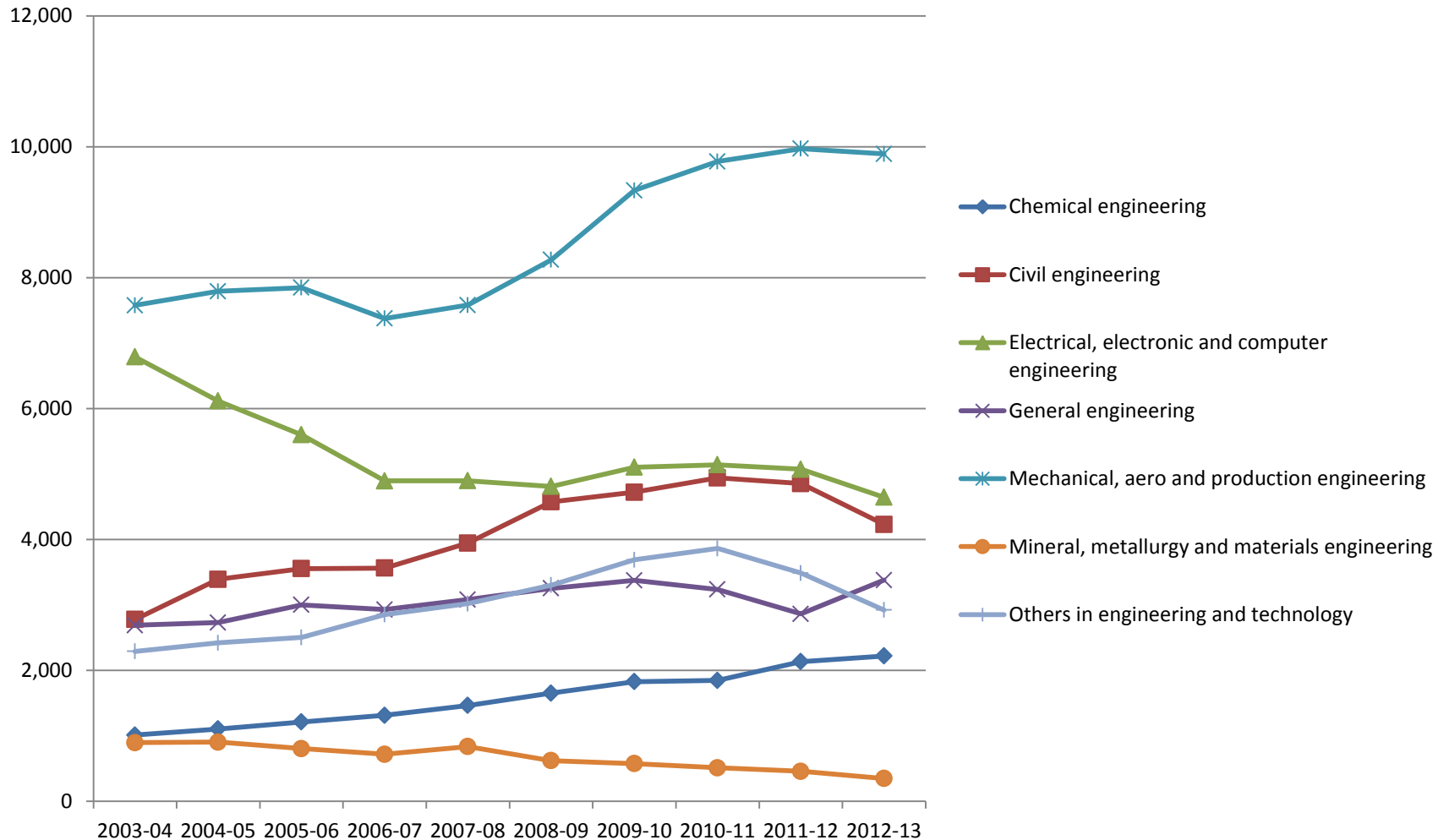
- Consulted in 2012 on a new SIVS policy approach
- HEFCE will provide continued support for those subjects identified as vulnerable including STEM
- HEFCE will no longer maintain a single list of SIVS but we will assess ongoing risks and consider interventions in conjunction with partner organisations
- HEFCE SIVS advisory group

HEFCE's support for STEM – inc. engineering

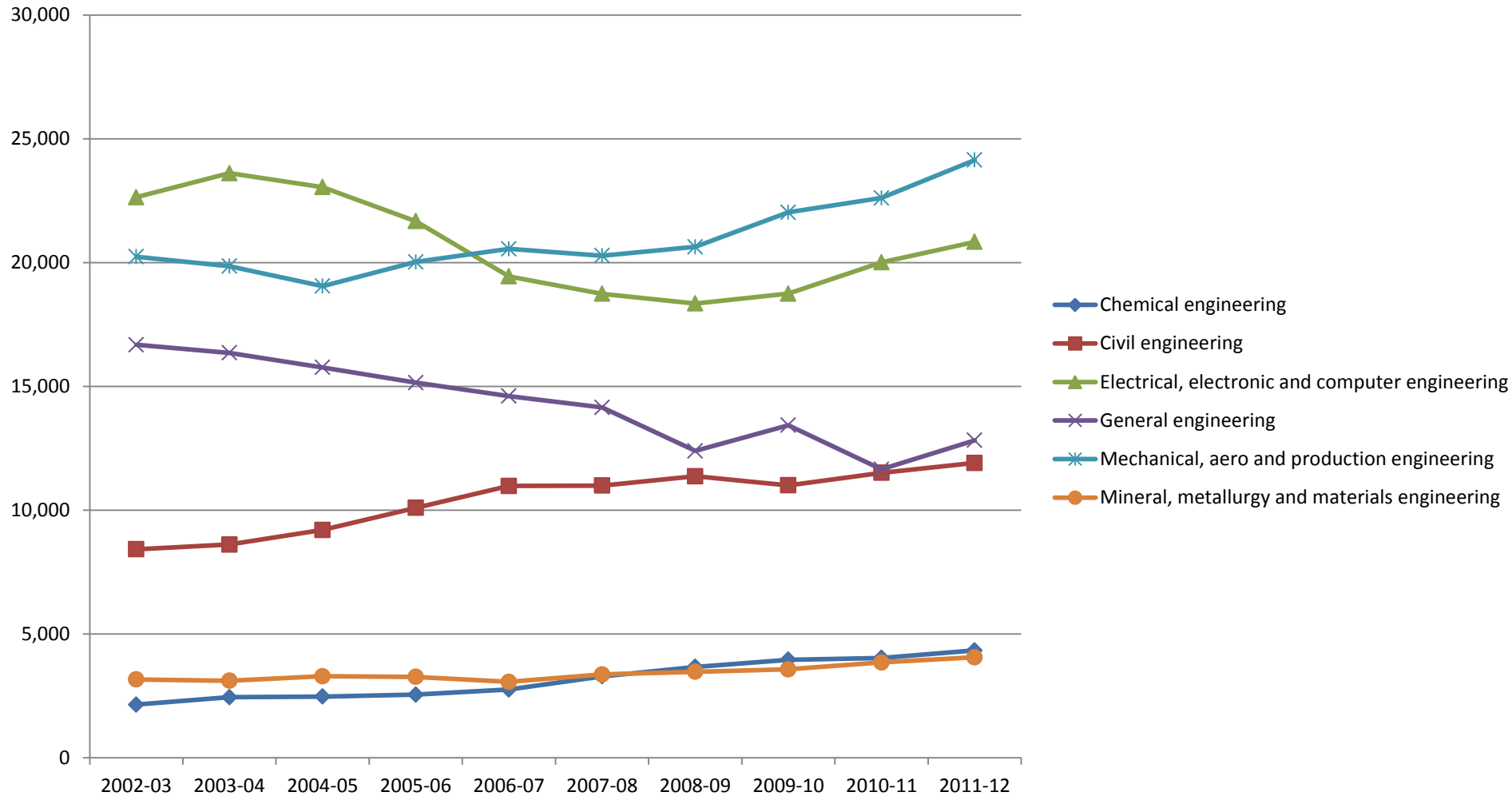


- Core funding in Band B, which with fees should increase overall resourcing levels
- Continuation of additional £23m funding for very high cost STEM subjects
- Protection for chemistry, engineering, maths, physics and MFL within 'core and margin'
- Additional £39m for postgraduate taught and £35m for postgraduate research
- Monitoring of impact of the reforms and response through Catalyst Fund

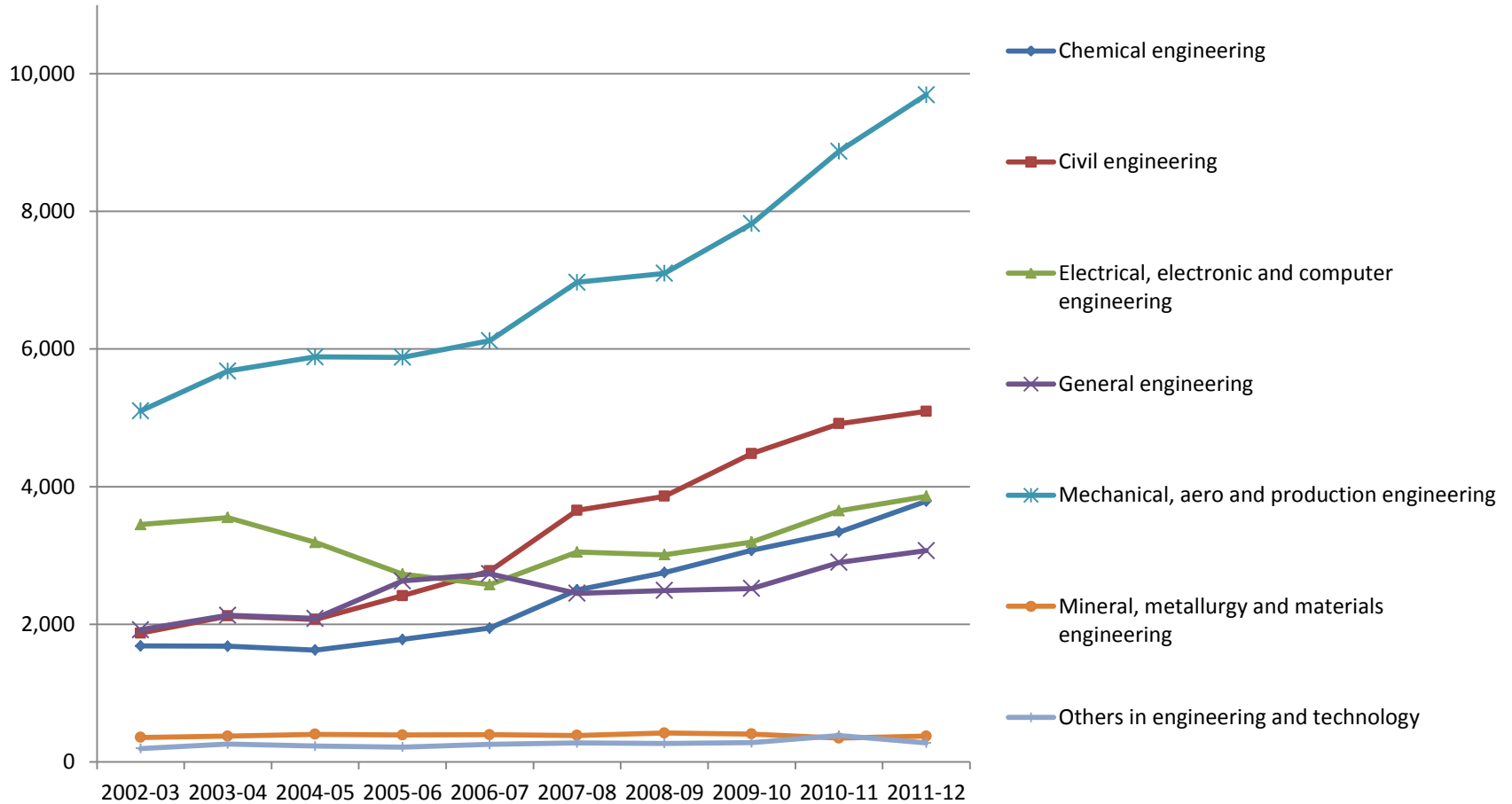
UCAS acceptances in engineering and technology



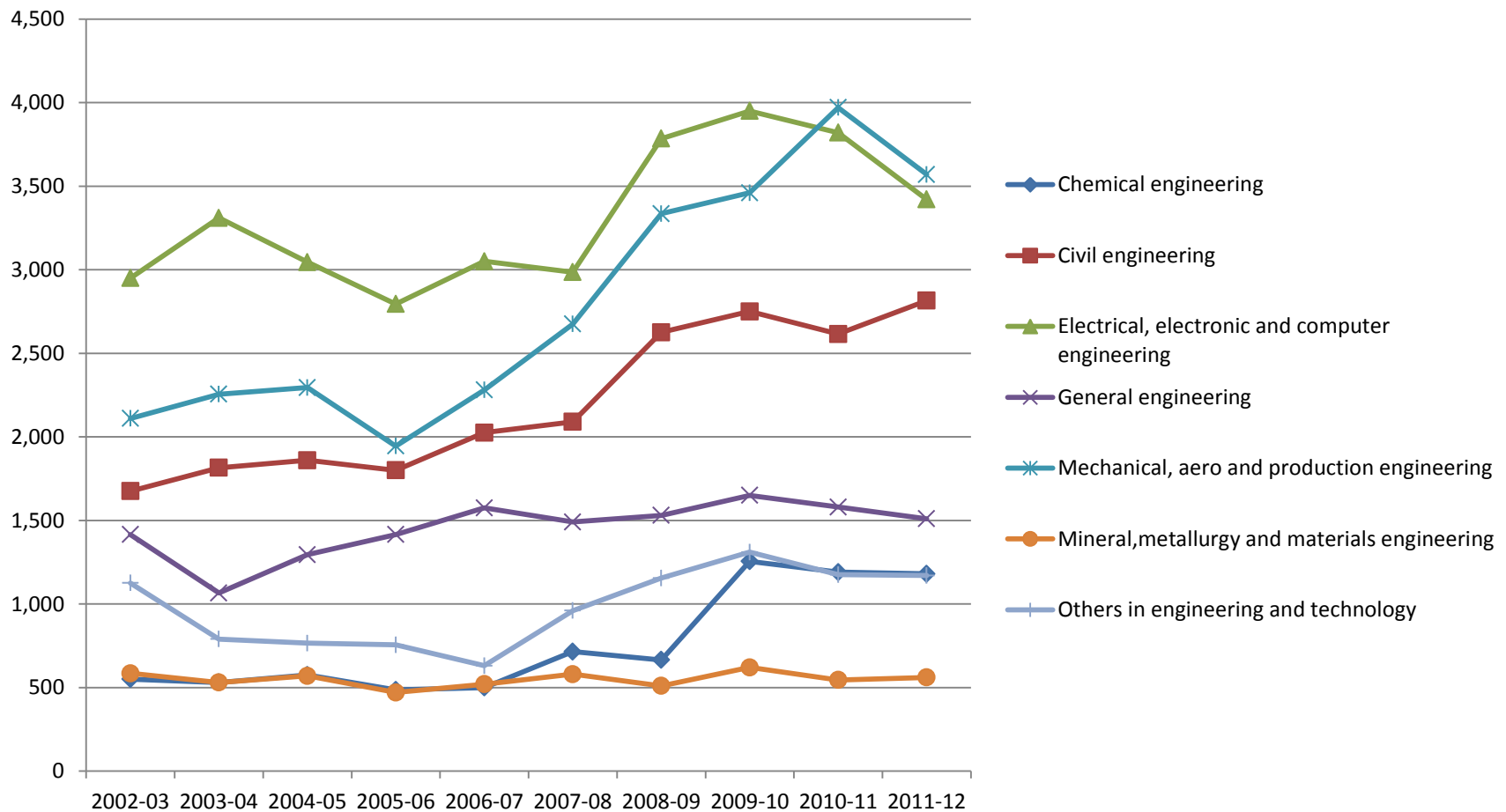
UG FTE in engineering and technology (by HESA cost centre)



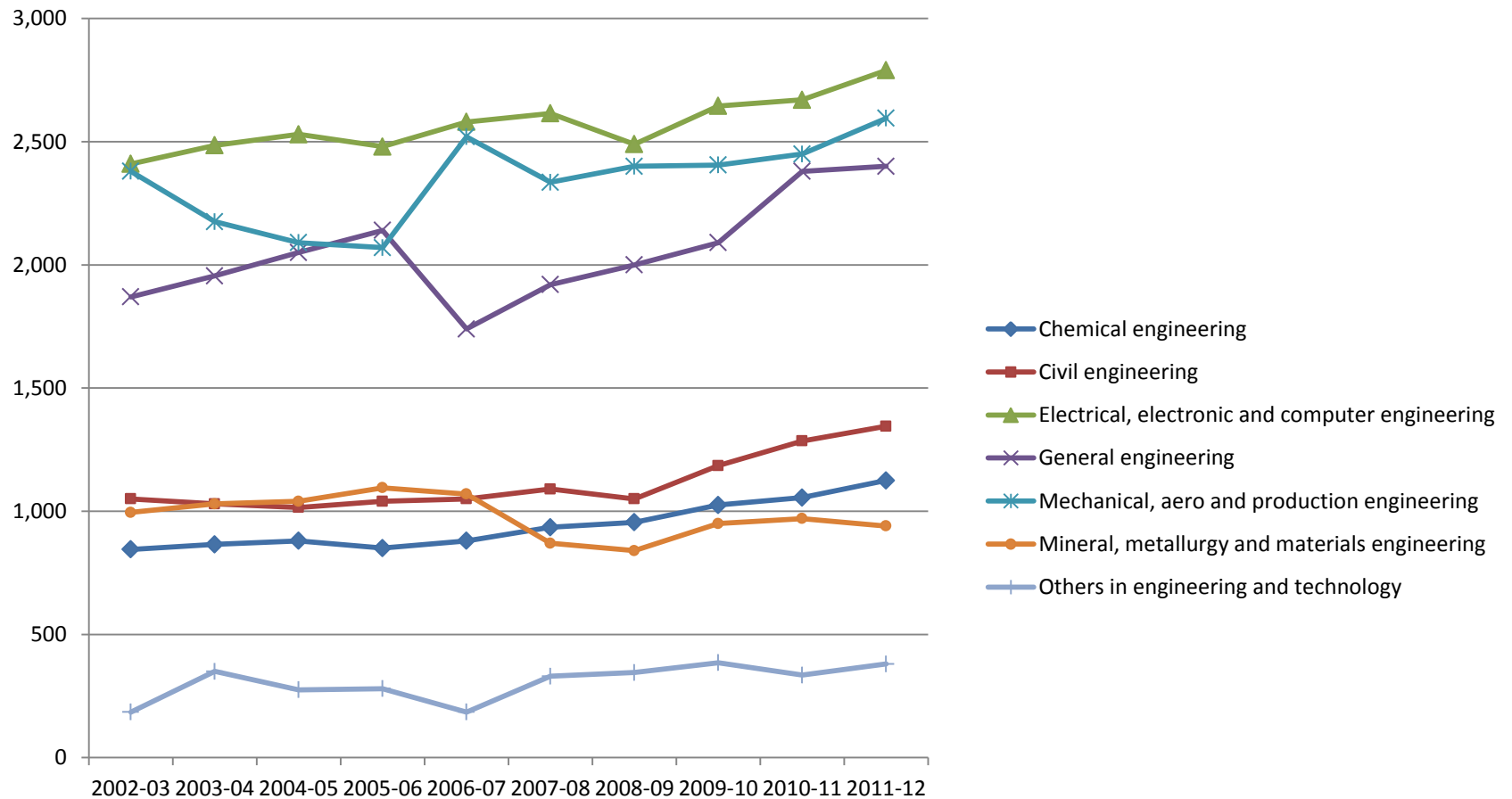
Integrated masters FPE in engineering and technology (by JACS codes)



PGT entrants FPE in engineering and technology (by JACS codes)



PGR FPE in engineering and technology (by JACS codes)



HEFCE's work on PG



- PGT funding maintained at pre-reform levels until 2014
- PGR funding maintained until 2015
- Research begun into PGT costs, using TRAC
- PGT home/EU fee levels collected via HESA from 2012
- UUK PG fees survey carried out
- NSS-linked 'intentions after graduation' survey pilot in 2013
- Information needs project
- WP – PG included in national strategy for access and student success



How to find out more

e-mail hefce@hefce.ac.uk

Twitter <http://twitter.com/hefce>

web-site <http://www.hefce.ac.uk/whatwedo/crosscutting/sivs/>

admin-hefce e-mail distribution list
HEFCE update, our monthly e-newsletter