



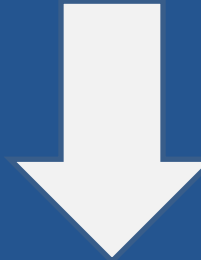
Admissions to engineering courses: the current situation

Professor Dik Morling
Chair of the Admissions Working Group
Engineering Professors' Council

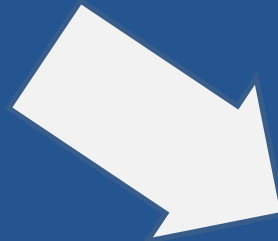


Key issues: pressure from a number of directions

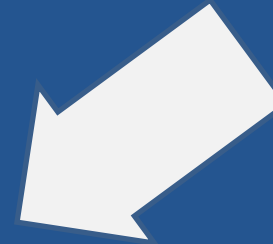
Examinations
reform



New and (it seems) constantly changing visa regulations: attractiveness of UK to overseas students



Changing UK HE landscape: fees regime, student number control, funding for STEM subjects



Building in “employability”:
Contribution to economic recovery and the skills agenda

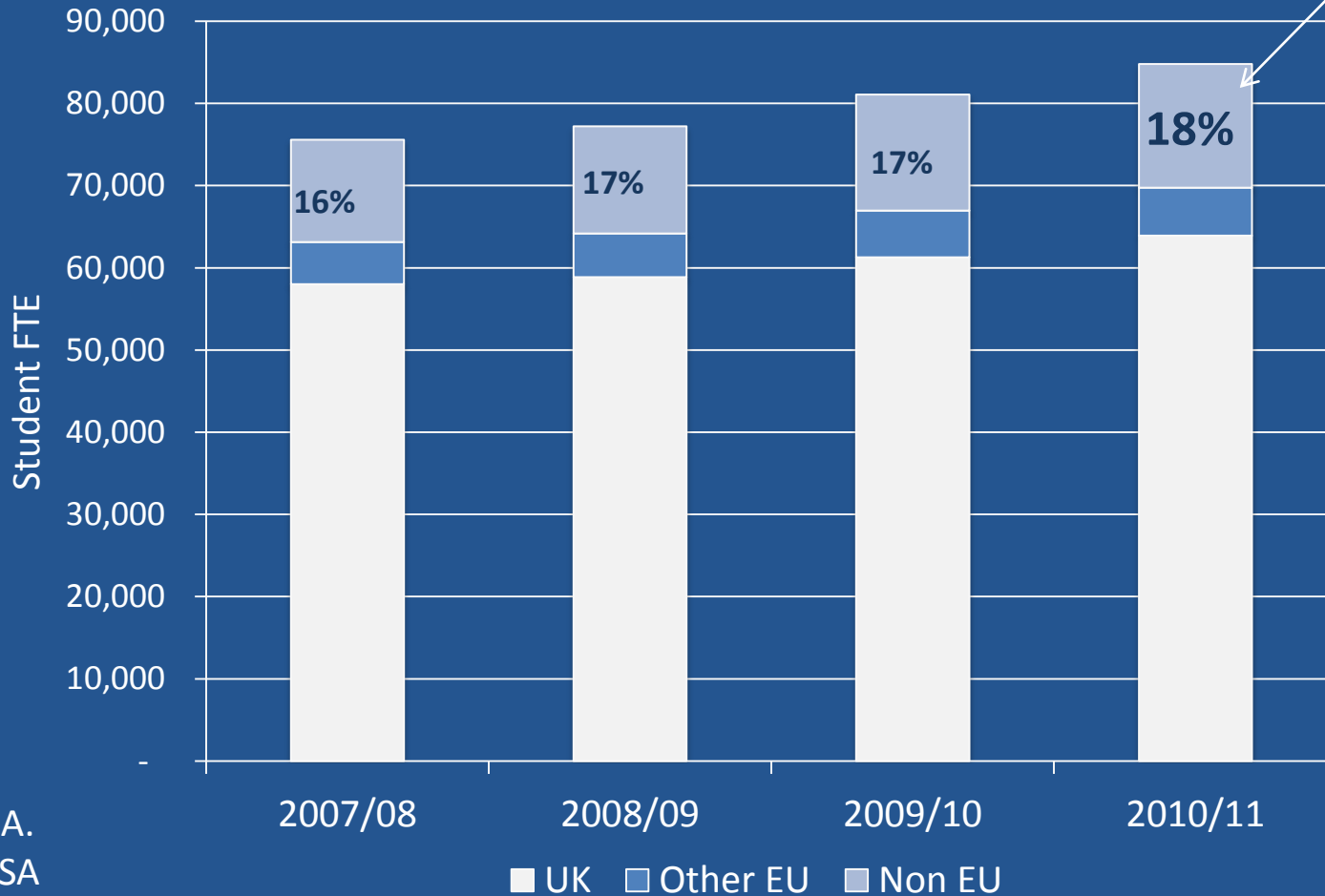




Key issues: importance of overseas students in engineering

Comparative figure is 8% for all HE UG students

Engineering & technology: undergraduate

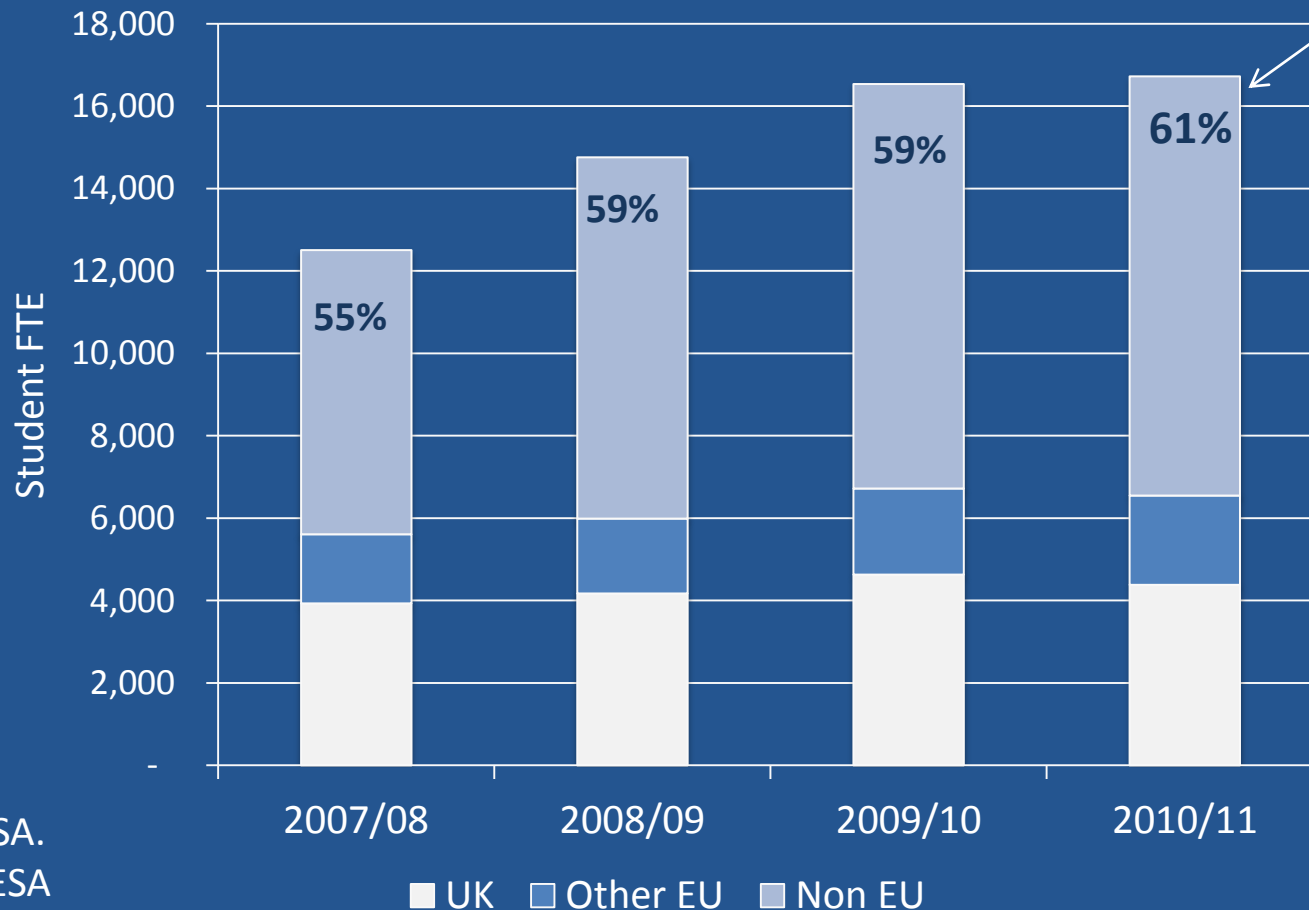


Source: HESA.
2011/12 HESA
data available
April 13



Key issues: importance of overseas students in engineering

Engineering & technology: Postgraduate (taught)



Comparative figure is 46% for all HE PGT students

Source: HESA.
2011/12 HESA data available April 13



Context: undergraduate acceptance trends

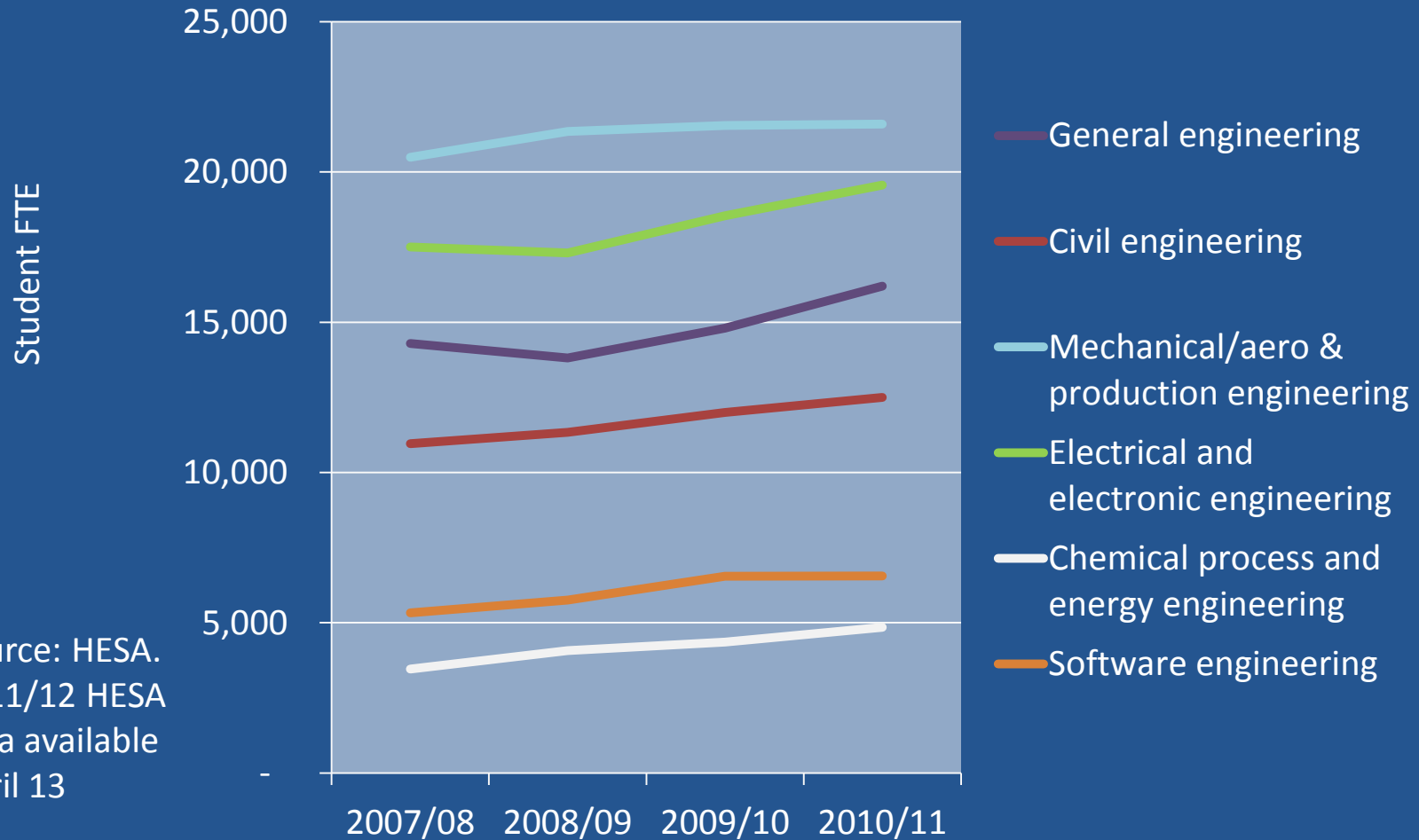
(Based on 23 August 2012 figures and annual data sets)

Subject group change	from 2002	from 2010	from 2011
F1 - Chemistry	46%	3%	0%
F3 - Physics	49%	18%	6%
G1 - Mathematics	90%	0%	-4%
G4/I1 - Computer Science	-22%	-6%	-7%
G6/I3 - Software Engineering	-2%	6%	-5%
H1 - General Engineering	25%	-2%	11%
H2 - Civil Engineering	65%	-14%	-13%
H3 - Mechanical Engineering	66%	5%	1%
H4 - Aerospace Engineering	44%	5%	-3%
H6 - Electronic and Electrical Engineering	-40%	-12%	-12%
H7 - Production and Manufacturing Engineering	-61%	-19%	-17%
H8 - Chemical, Process and Energy Engineering	116%	16%	0%

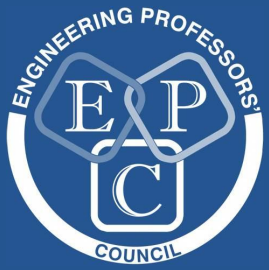
Source: UCAS



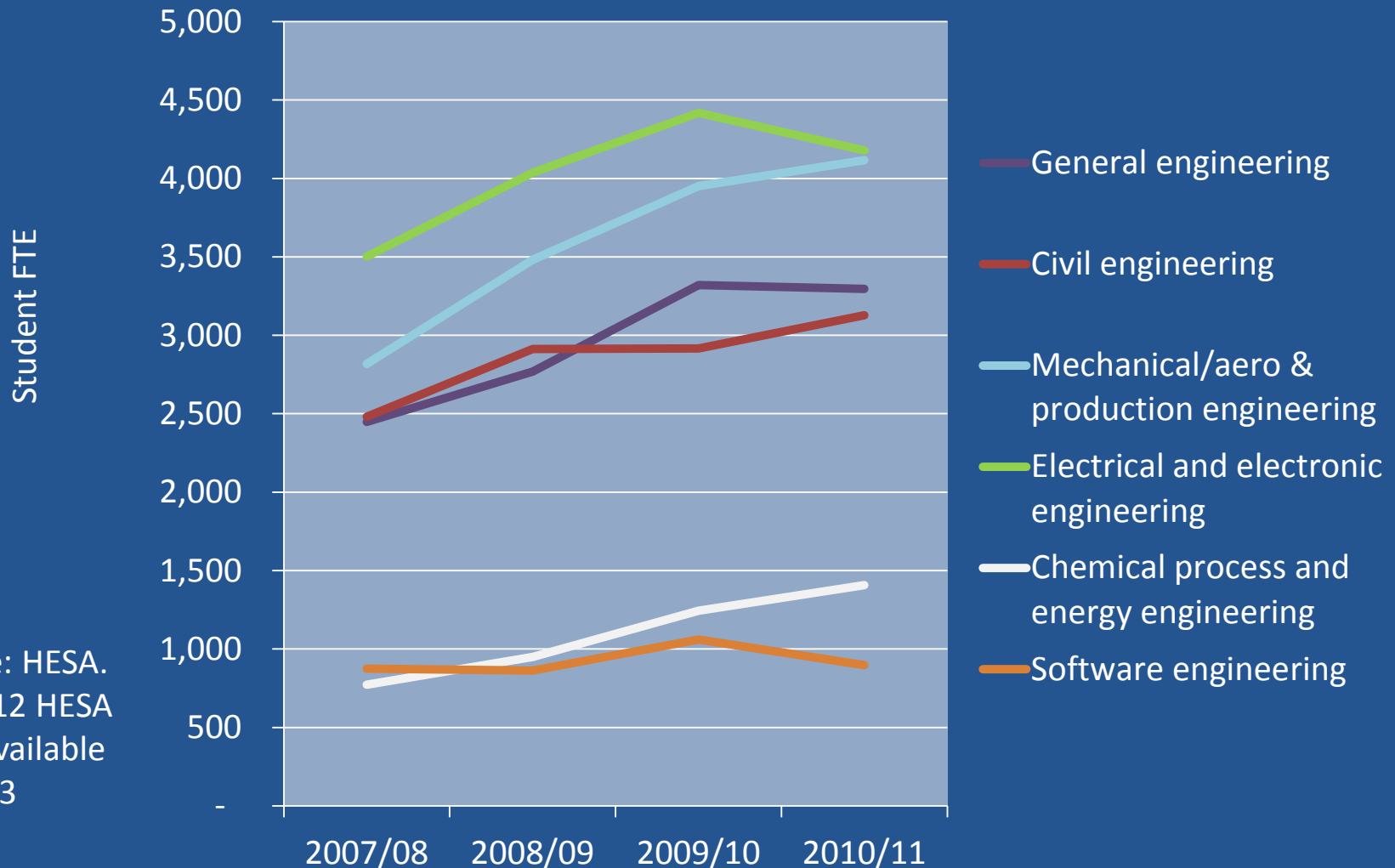
Context: trends by discipline: Undergraduate (UG) students



Source: HESA.
2011/12 HESA
data available
April 13



Context: trends by discipline: Postgraduate taught (PGT) students

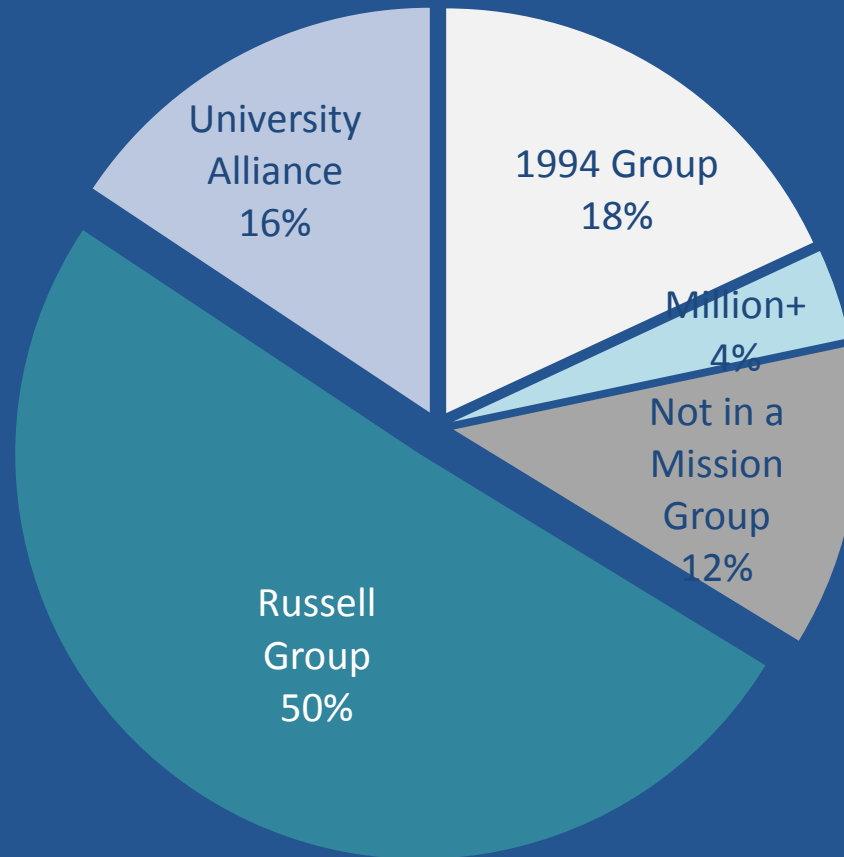


Source: HESA.
2011/12 HESA
data available
April 13



EPC 2012/13 enrolments survey: response

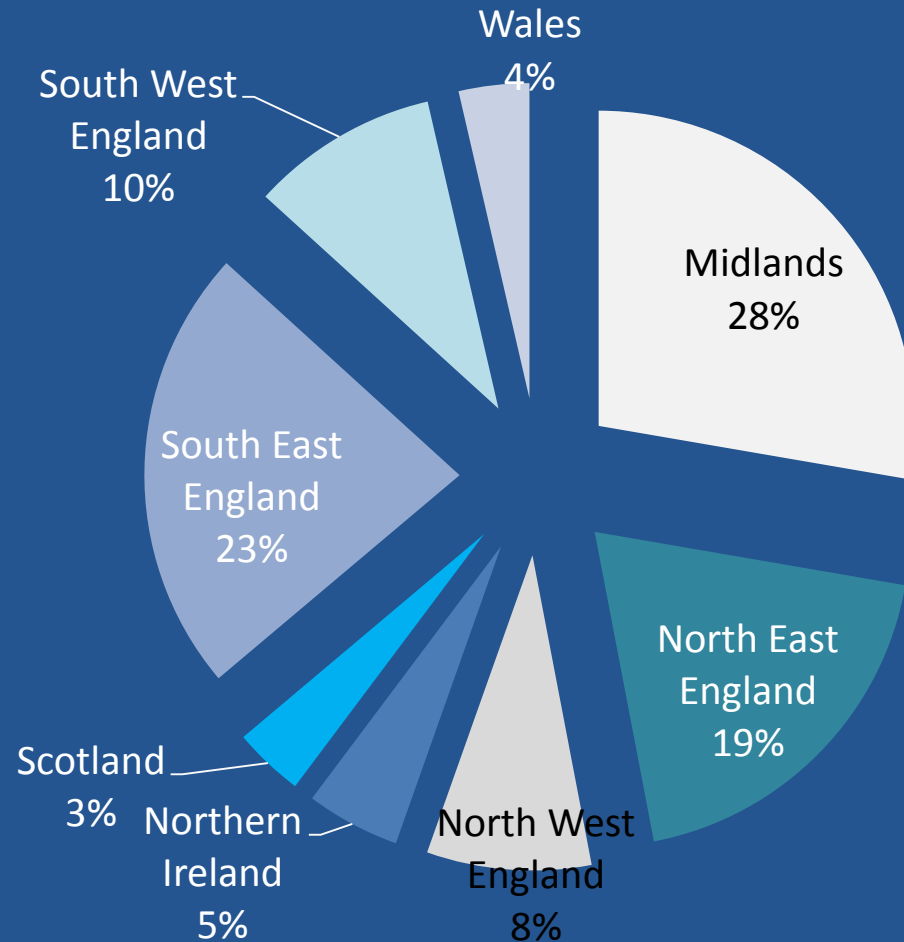
83 departments from just over 50 universities responded, representing around half of universities in the UK with UG and/or PGT students registered as studying at least one of the engineering disciplines.





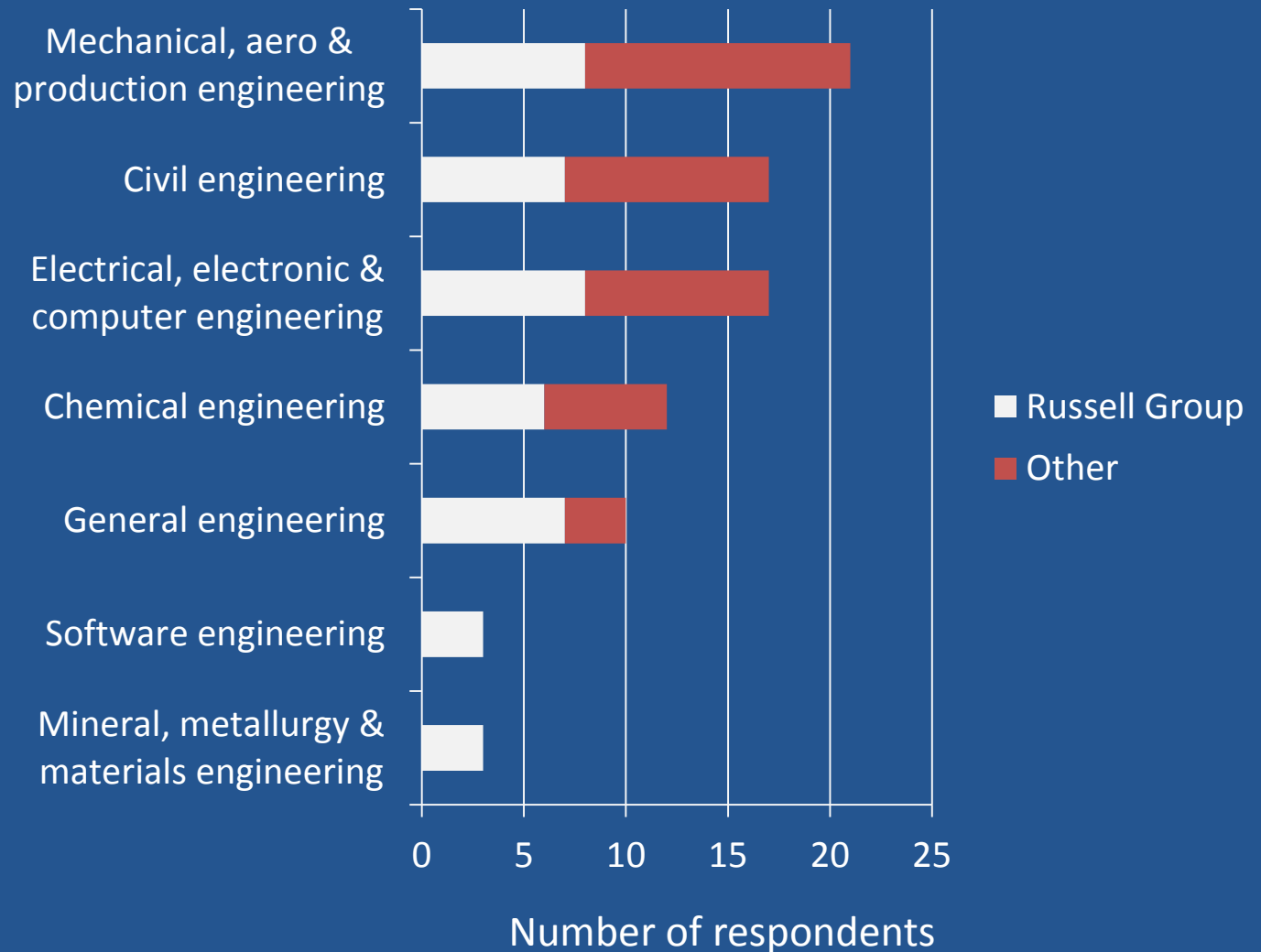
EPC 2012/13 enrolments survey: response

...from across the UK





EPC 2012/13 enrolments survey: response

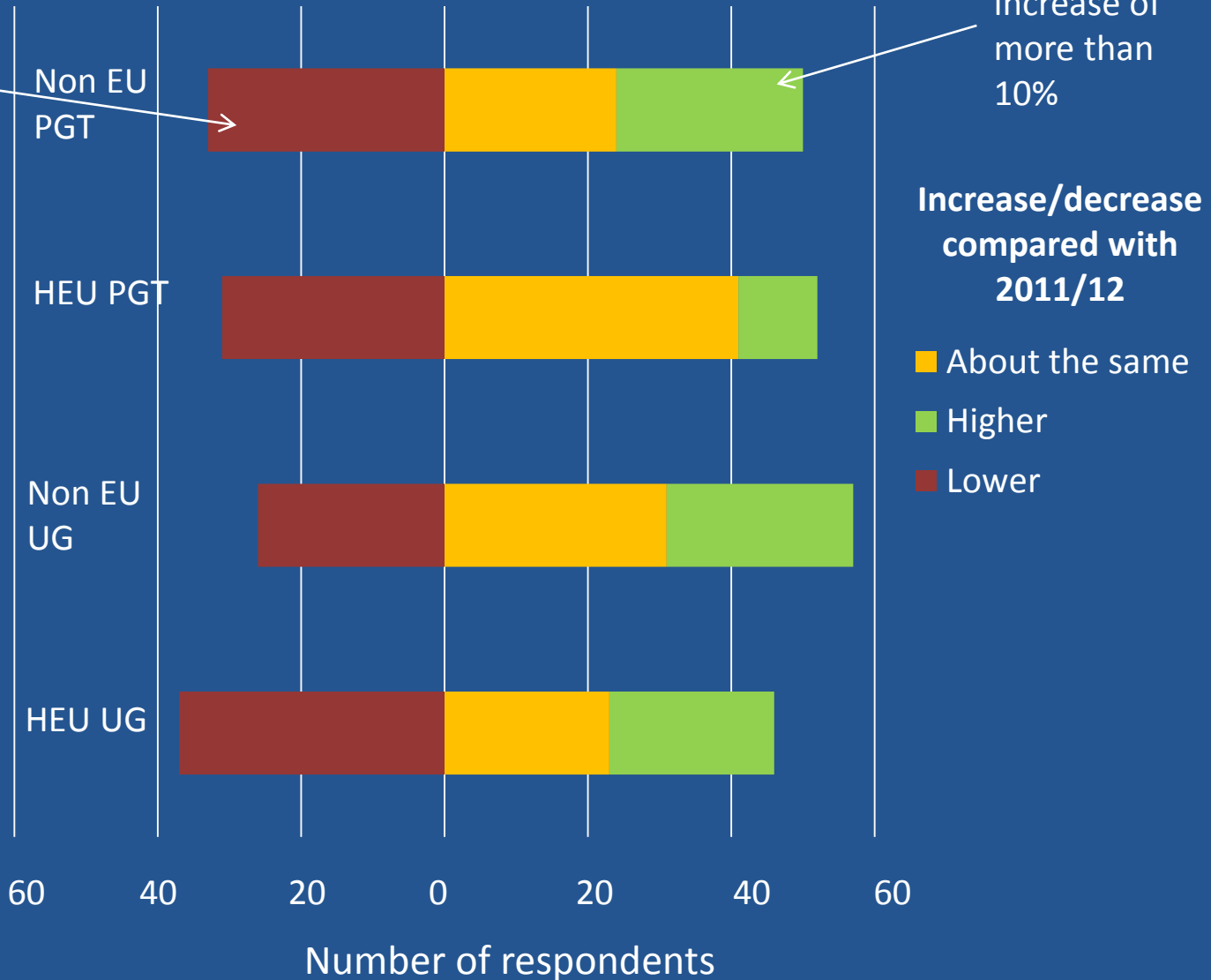




EPC 2012/13 enrolments survey: summary

73% report a reduction of more than 10%

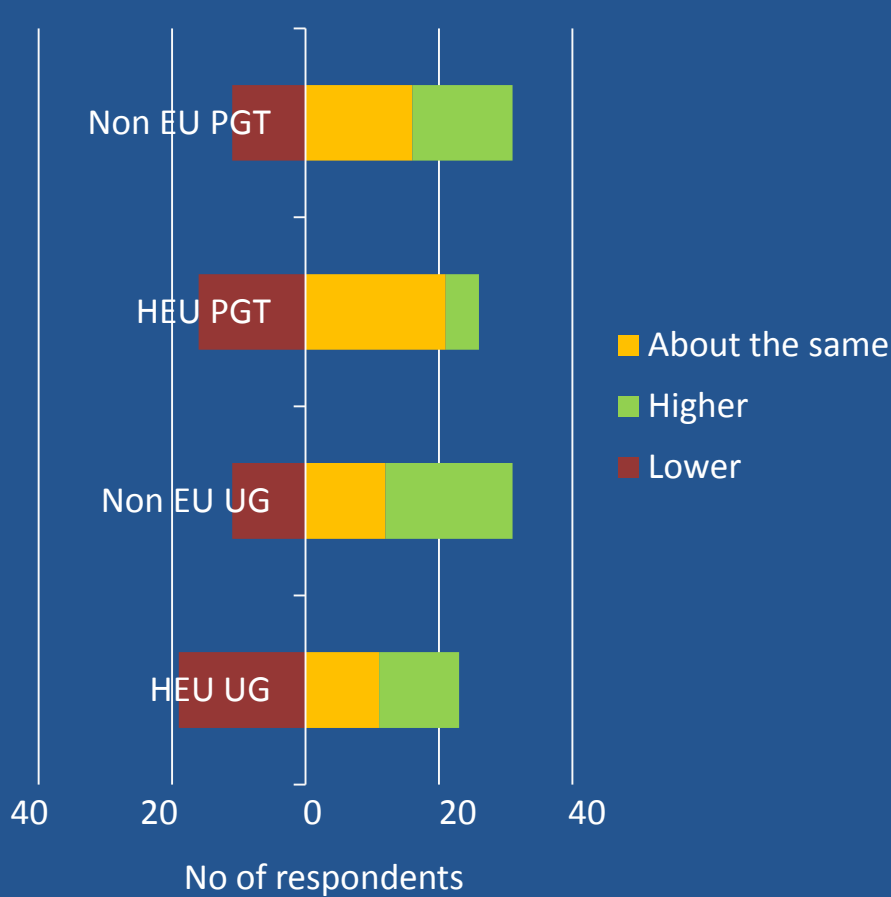
50% report an increase of more than 10%



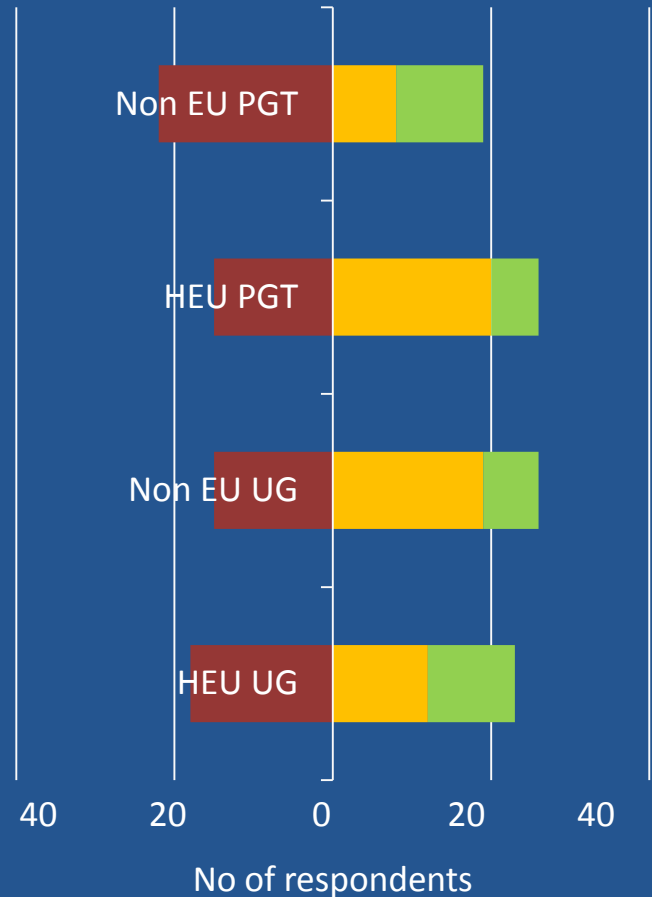


By Mission Group

Russell Group

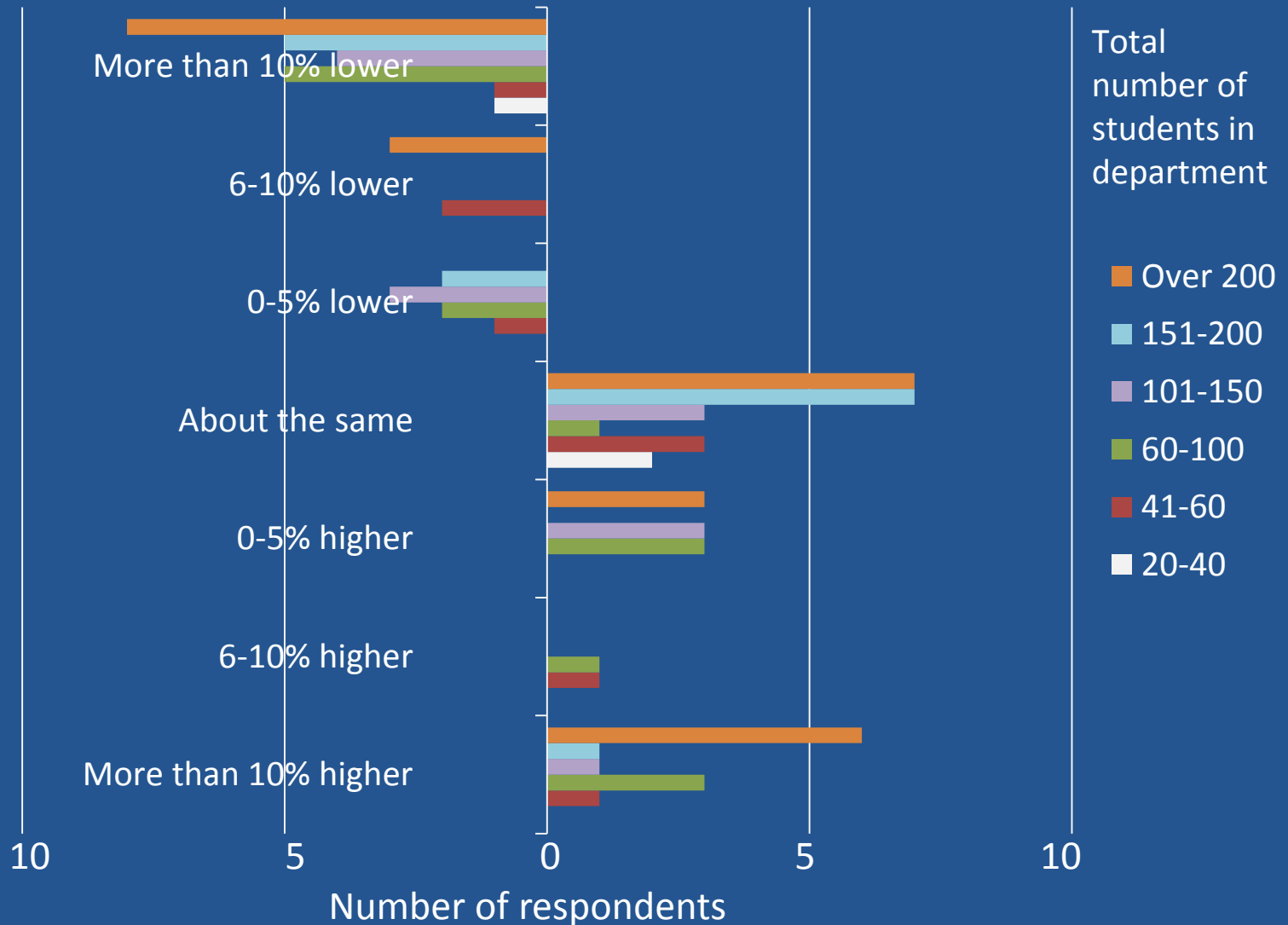


Other



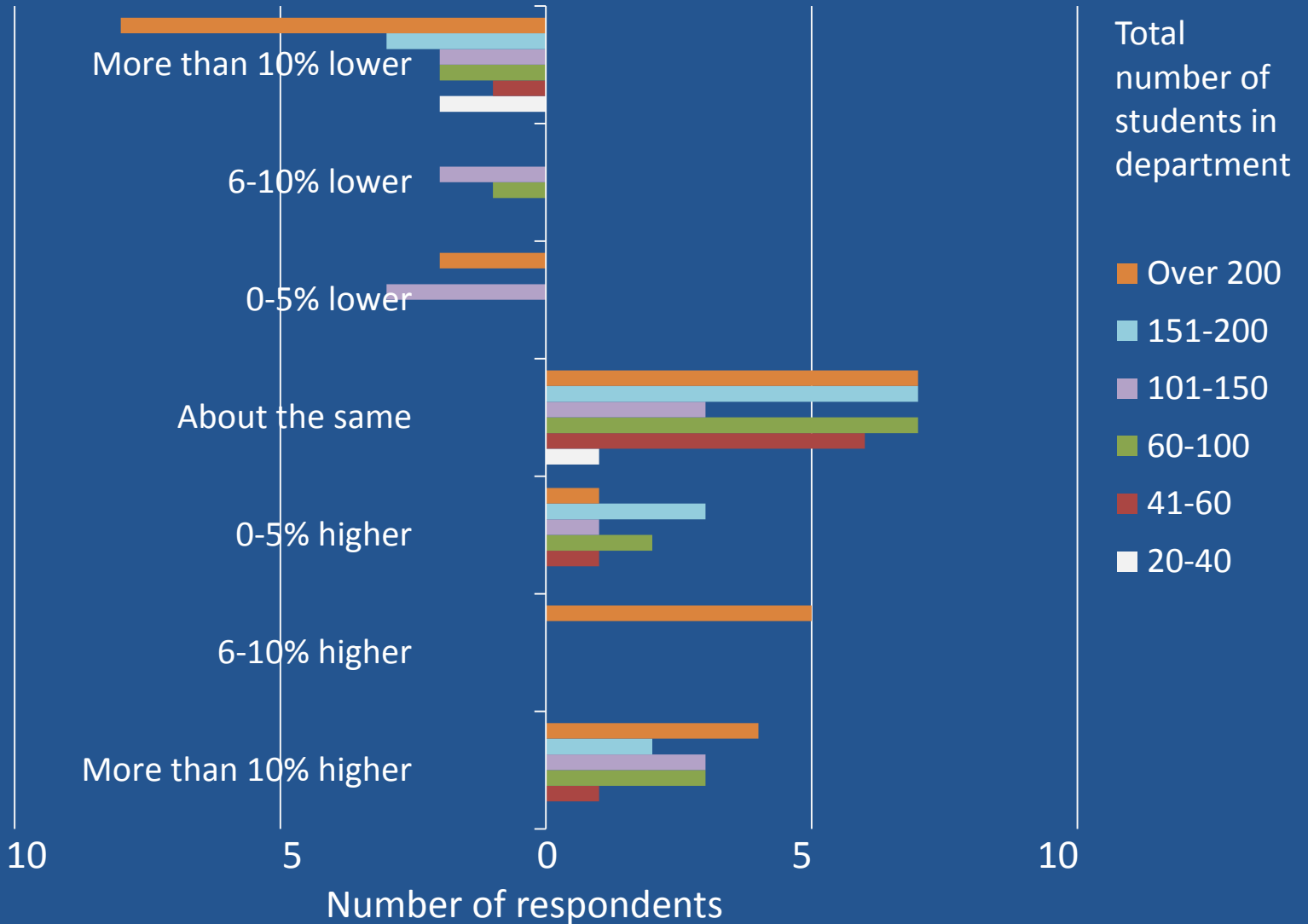


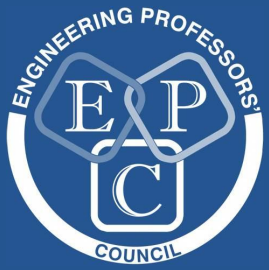
By size: HEU undergraduates



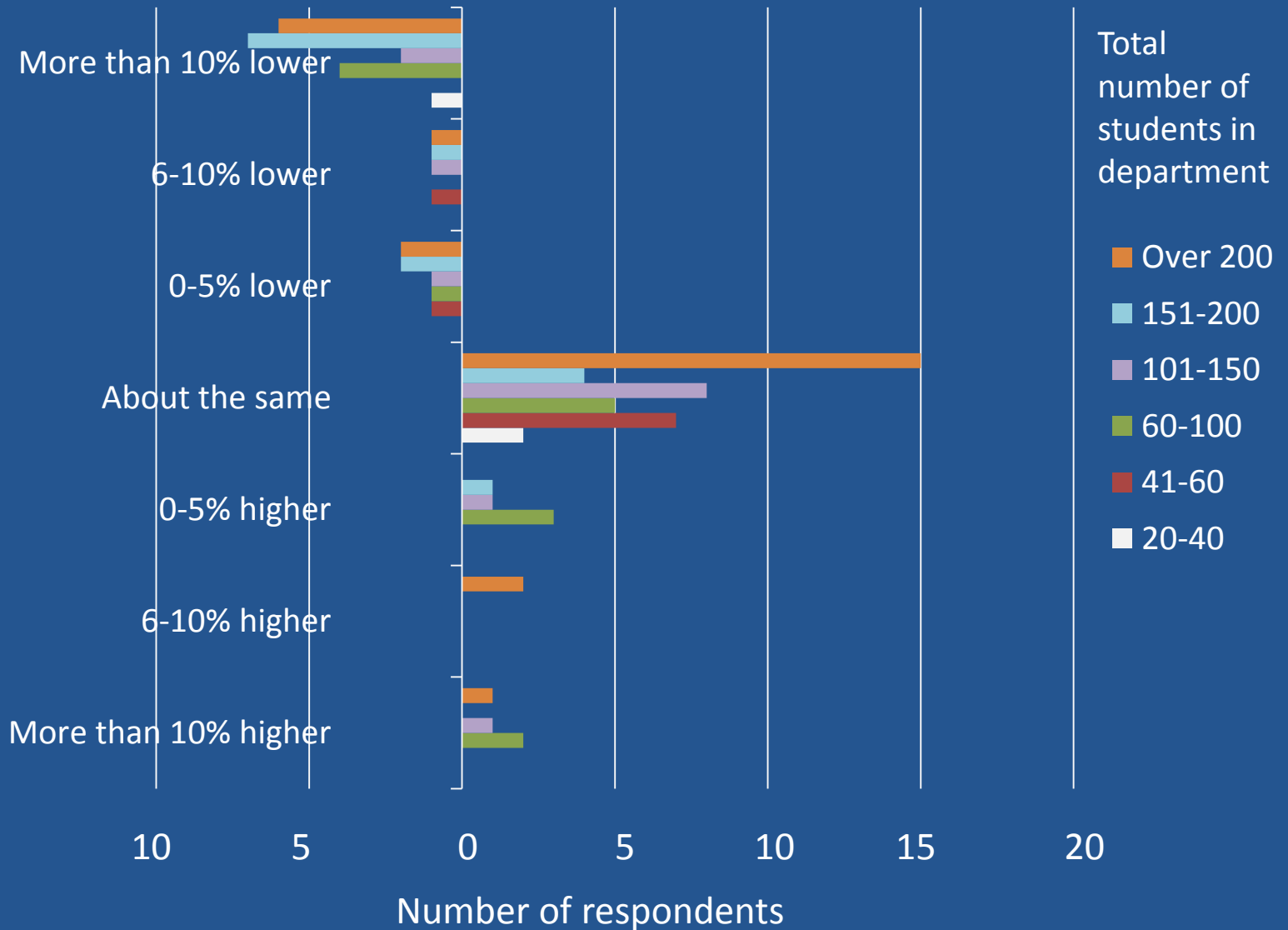


By size: Non EU undergraduates



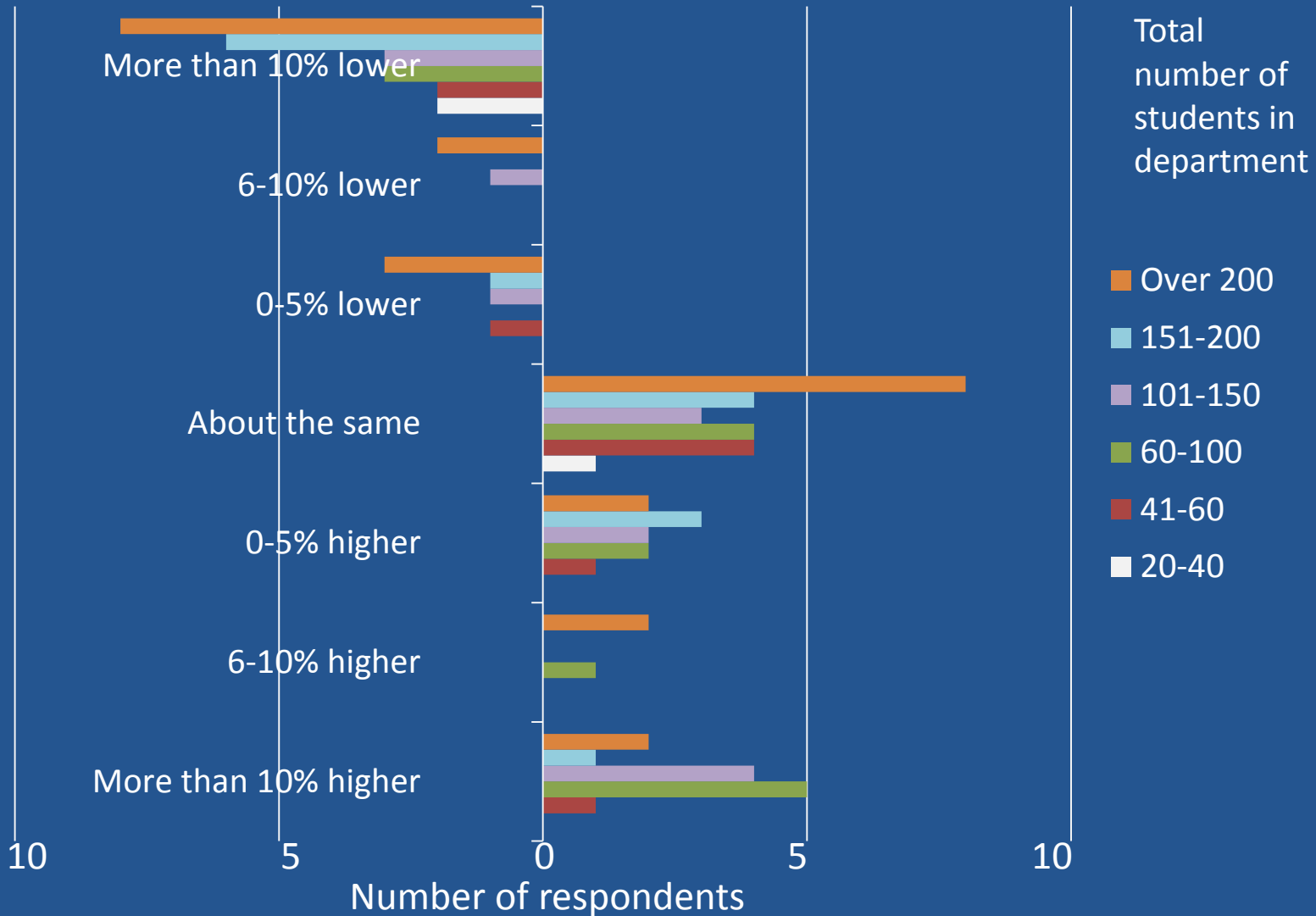


By size: HEU postgraduate (taught)



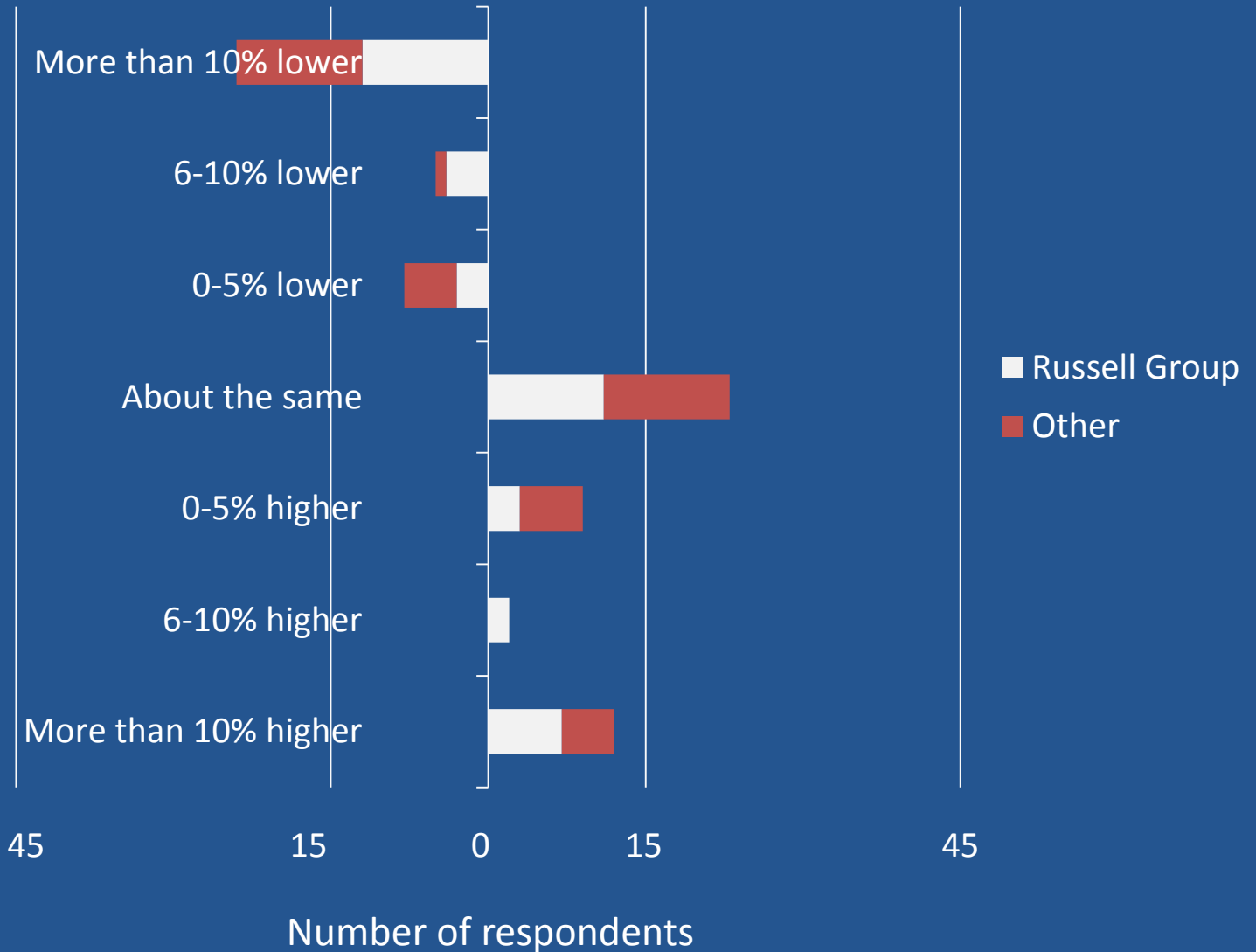


By size: Non EU postgraduate (taught)



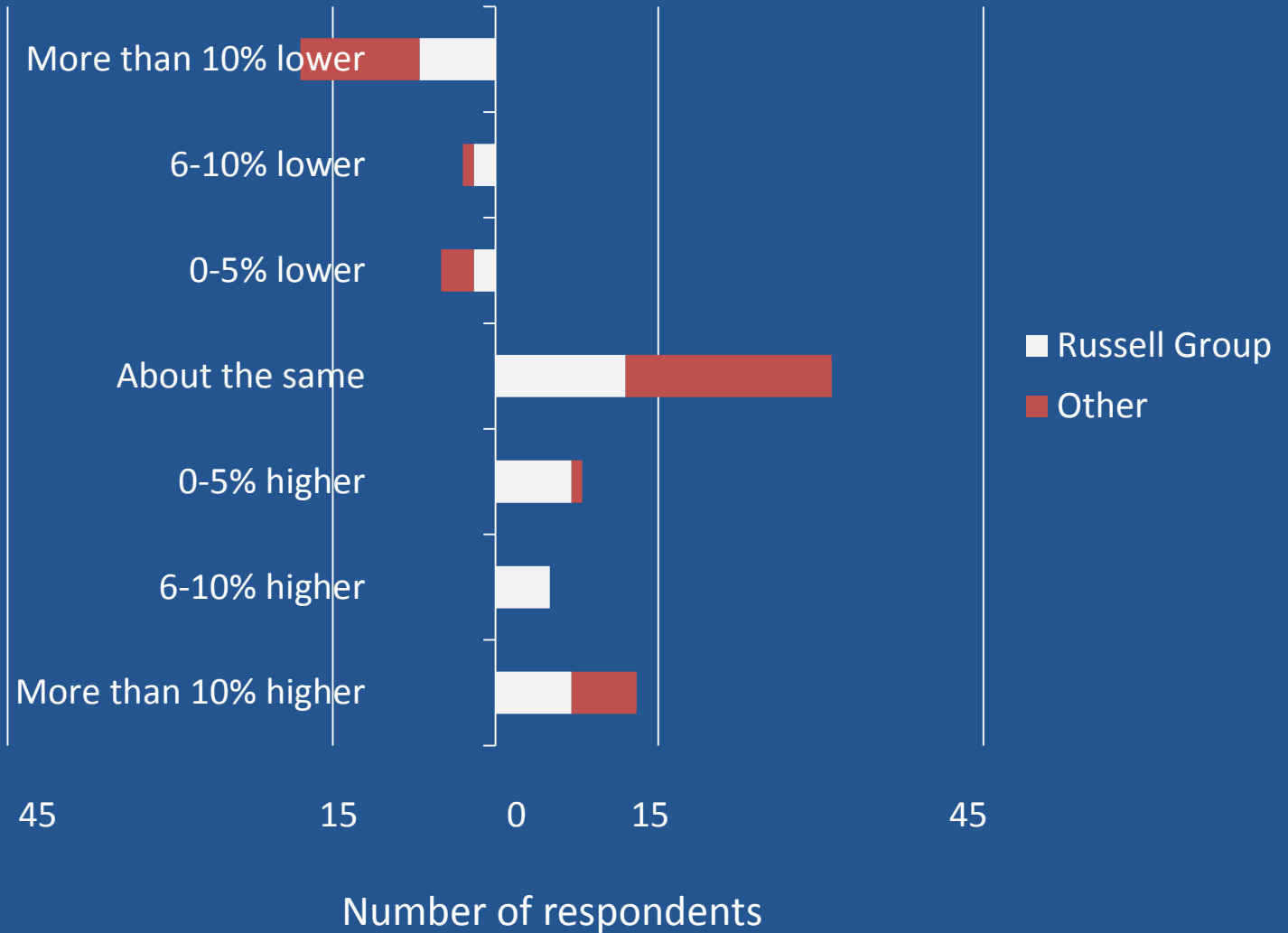


HEU undergraduate: by Mission Group



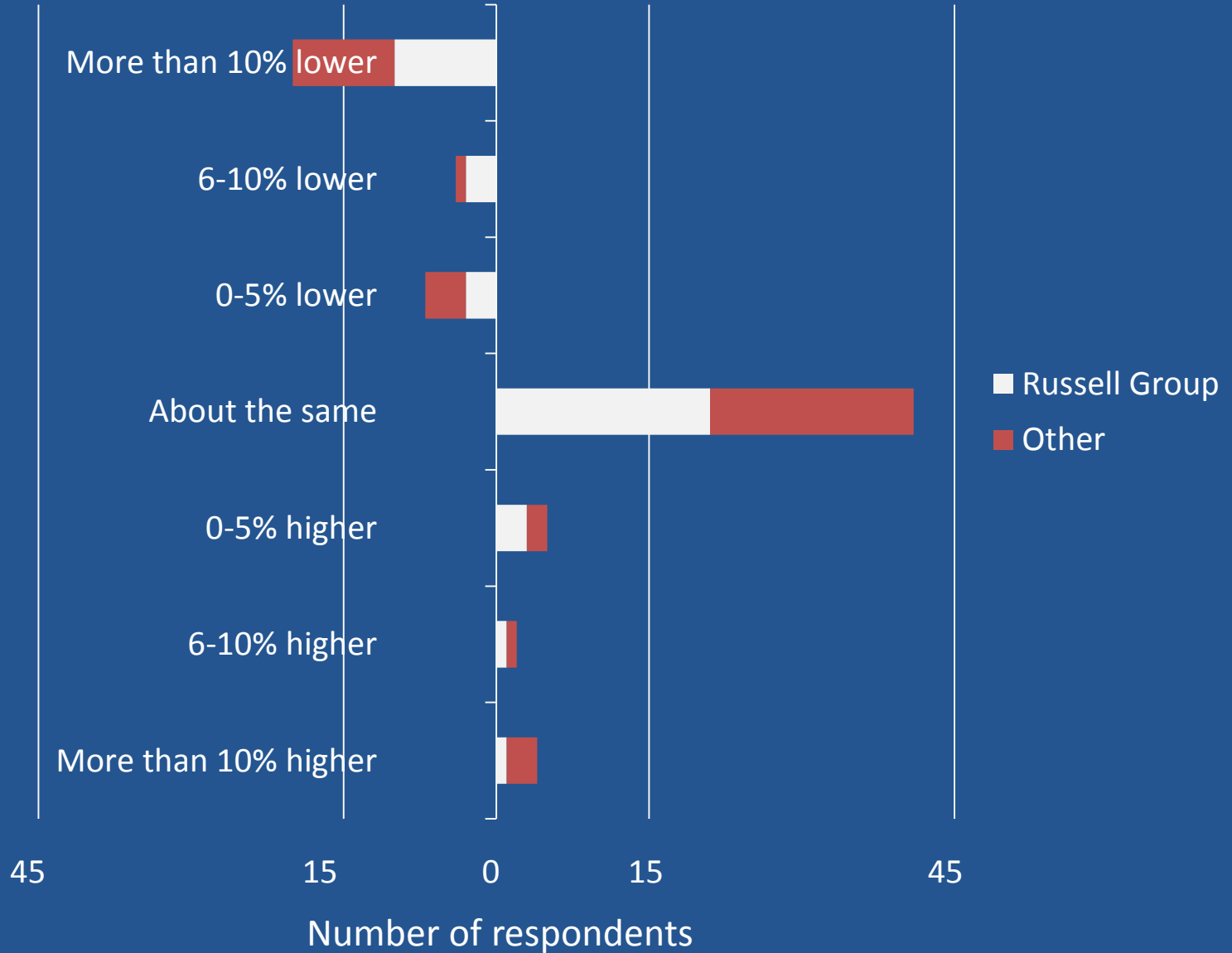


Non EU undergraduate: by Mission Group



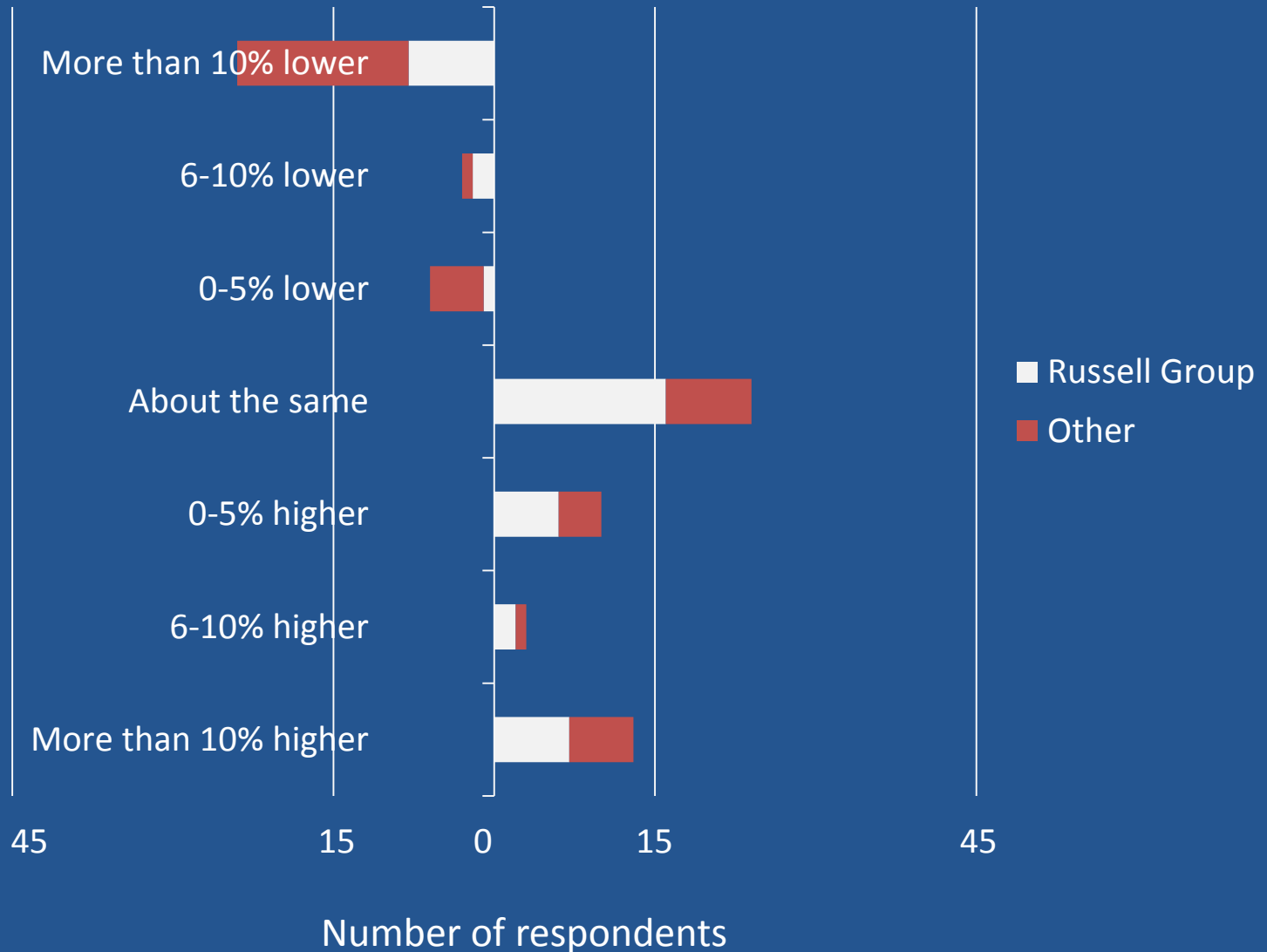


HEU postgraduate (taught): by Mission Group



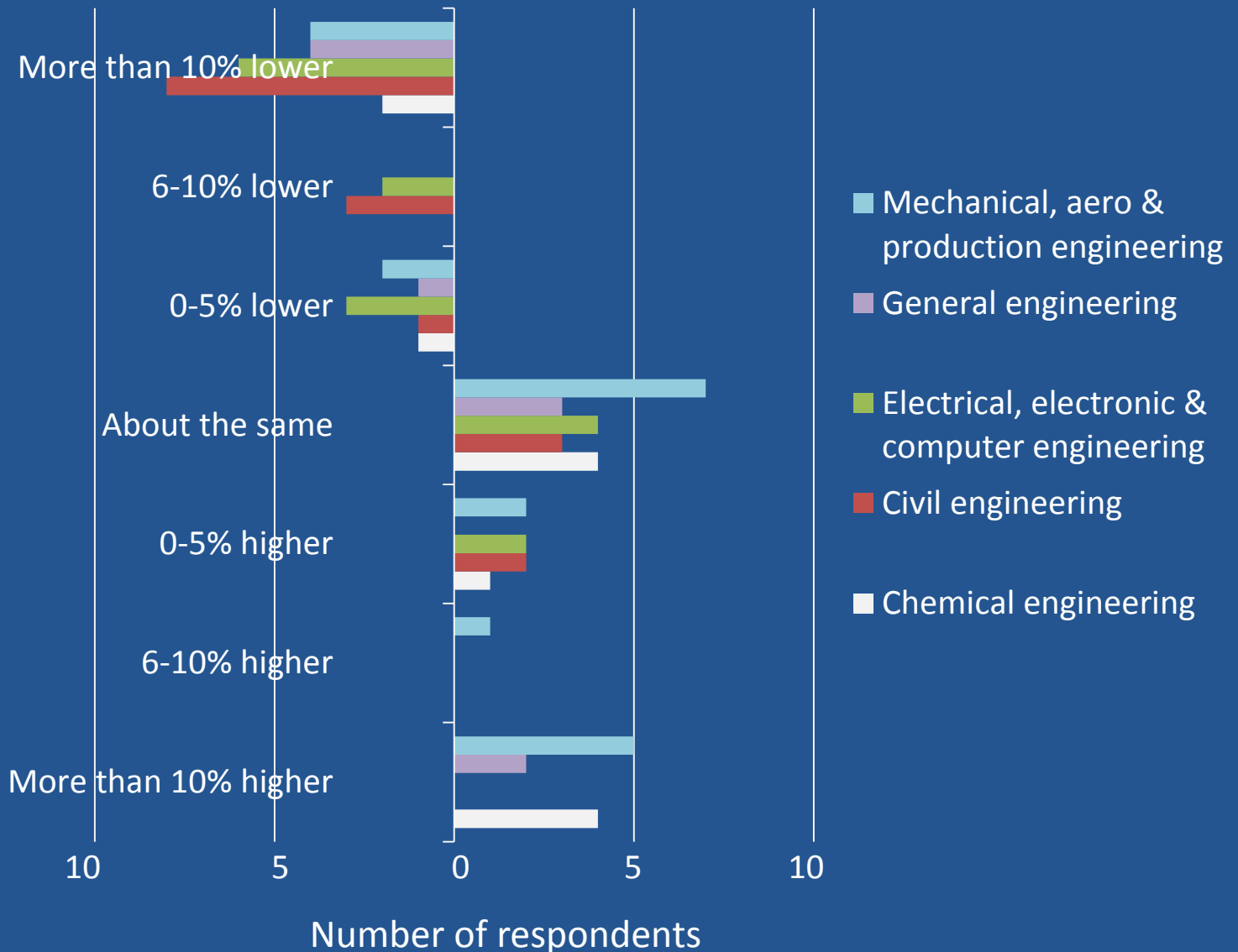


Non EU postgraduate (taught): by Mission Group



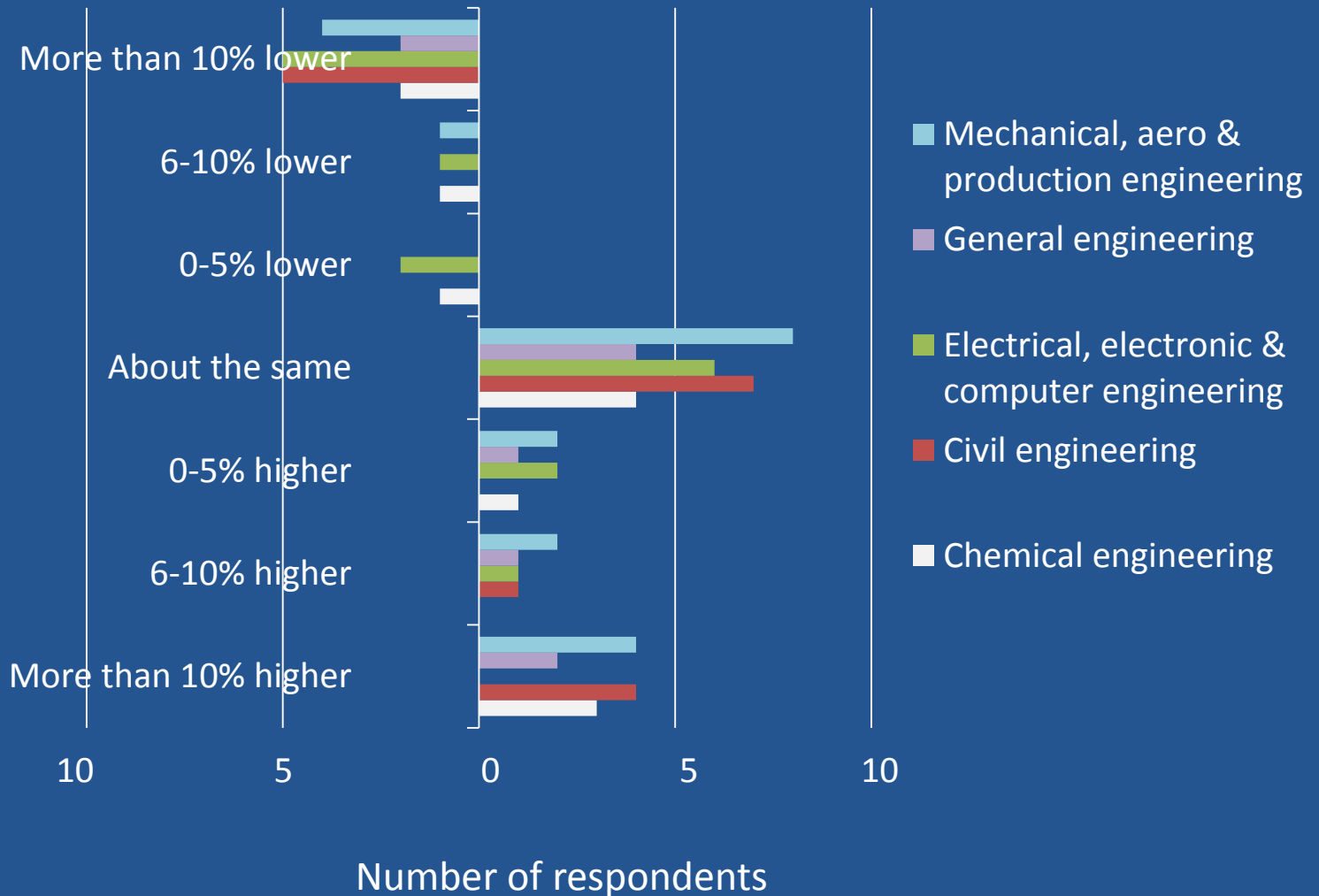


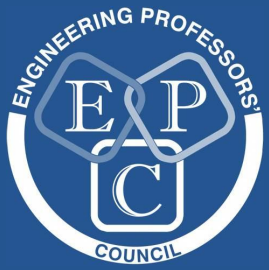
HEU undergraduate: all respondents, by discipline



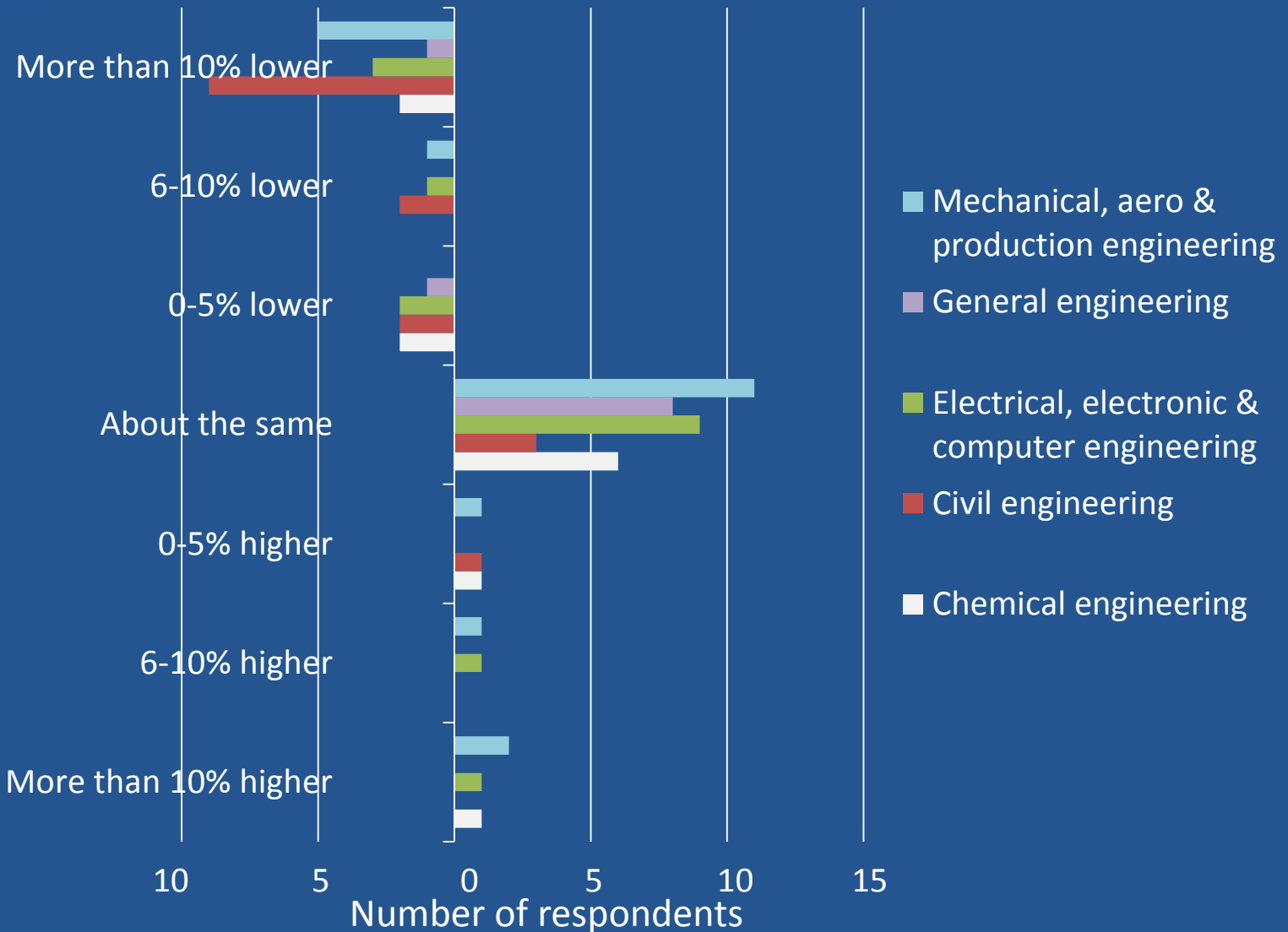


Non EU undergraduate: all respondents, by discipline



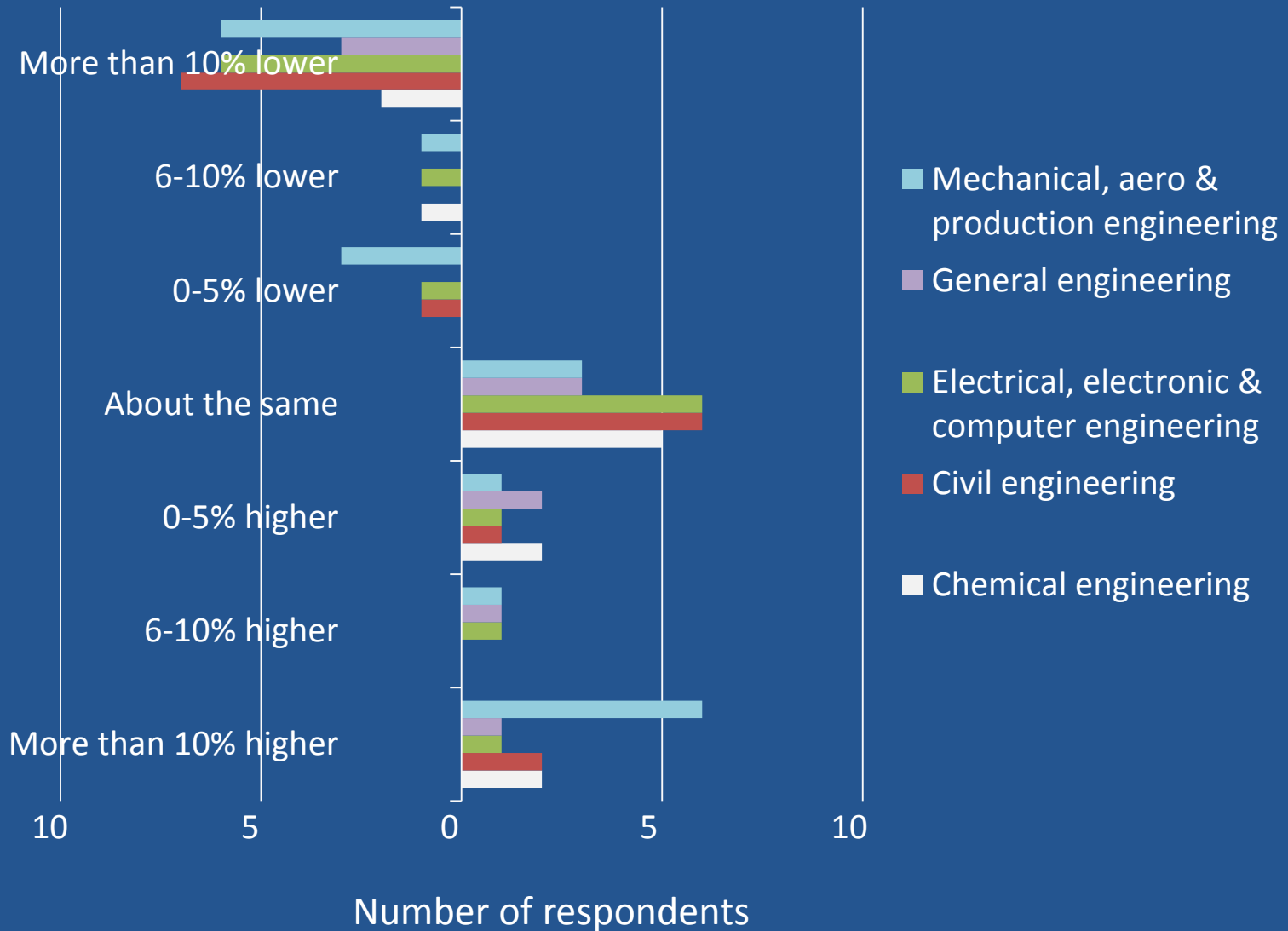


HEU postgraduate (taught): all respondents, by discipline



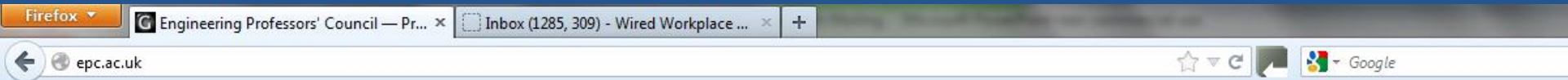


Non EU postgraduate (taught): all respondents, by discipline





New website



- HOME
- ABOUT US
- OUR NETWORK
- JOIN US
- EVENTS
- EPC PEOPLE
- EPC PUBLICATIONS
- MEMBERS' AREA
- FORUM

Opportunities to contribute and influence

2012/13 enrolments to engineering



EPC's annual Recruitment and Admissions Forum on 7th November at the Royal Academy of Engineering will be looking at the current challenges in continuing to attract students from both the UK and around the world to study engineering. This is a critical year for engineering programmes in the UK. The new fees regime, changes to the visa regulations and the fall out from the revocation of a sponsor licence are all having their impact. This is a chance to gather and share information about the impact on the different engineering disciplines at both undergraduate and postgraduate level and look at what's working and what isn't to help you to inform future planning decisions in your institution. It's also a chance to reflect on how we can ensure the ongoing health of UK engineering in this competitive international environment.

Highlights of this year's forum include speakers from the Times Higher Education, the British Council, Engineering UK, Cambridge Education and the Engineering Professors' Council and the results of the online survey we've conducted on the current

Follow us on



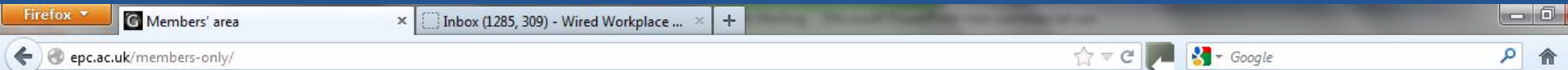
Events

- EPC Recruitment and Admissions Forum
- European Network for Accreditation of Engineering Education (ENAAE) Annual Conference
- International Student Recruitment: Understanding and Complying with the Points Based Immigration System
- all events

Quick updates



Members' area



- HOME
- ABOUT US
- OUR NETWORK
- JOIN US
- EVENTS
- EPC PEOPLE
- EPC PUBLICATIONS
- MEMBERS' AREA
- FORUM

Members' area



Access to the resources listed here is password-protected. Please [contact us](#) if you are a member and have forgotten your password.

Currently, Committee papers are available here. Over the coming months, we will be developing a toolkit of further resources to help members with leadership and personal development as well as providing benchmarking data and other tools to help with doing your job. Check frequently for updates or [follow us on Twitter](#).

Committee papers

[Committee papers](#)

Working groups

[Working groups](#)

Datasets and analysis

[Datasets and analysis](#) Benchmark data, applications performance, employability analysis and a host of other information is available to members here.

EPC Toolkit

[Toolkit](#)



Upcoming events

Congress2013: 16/17 April 2013 at the
University of Portsmouth

<http://epc.ac.uk>

Follow us on



@epc1994