



**WELCOME  
TO  
LOUGHBOROUGH UNIVERSITY**

**Professor Neil Halliwell**

**Provost and Deputy Vice Chancellor**







**A single site campus  
177 hectares (438 acres)  
a student village, library etc.  
a “green” environment  
plenty of open space, gardens and sport areas**

**Faculties of Engineering, Science,  
Social Science and Humanities  
22 departments, 15000 students**

# The University can trace its origins to 1909



**Dr Herbert Schofield, Principal, Loughborough Colleges, 1915-1950, whose concept of “training on production” in an “instructional factory” set the scene for the development of sandwich courses and practical short courses**



**What makes  
Loughborough University different?**

**Its relationships with Commerce,  
Business and Industry**

**Students Union Activities**

**Engineering & Sport**



Companies sponsoring our degrees help design, develop and deliver them: this ensures that newly employed graduates are professionally and commercially trained.

### Civil Engineering



### Accounting and Financial Management



### Banking, Finance and Management



### Commercial Management and Quantity Surveying



### Automotive Systems Engineering



### Electronics and Software Engineering



### Retail Management



### Management Sciences



### Construction Engineering Management



### Systems Engineering





Approximately 800 students are on work placements in 500 companies)

3Com Europe Ltd 3COM Ltd 3i 3M Health Care Ltd 3M Neotechnic Ltd 3M United Kingdom plc A.P. Valves Limited Abbott Gmbh Accenture Adams & Sons Advantica Technologies Ltd Agco Ltd Agilent Technologies Airedale International Air Conditioning Albright & Wilson Ltd Alcan International Leicester plc Alstom Power Alvis Vehicles Ltd Amadeus Development Company AMEC AMEC Civil Engineering Ltd AMEC Civil Engineering Ltd Artform International Ltd Ashdown Hurrey Aston Martin Astra Charnwood AstraZeneca AT&T Global Networks Services Atco Avesta Sheffield Ltd AXA Sun Life B.A.S.F. plc B.M.R.B BAE Systems Baker Tilly Balfour Beatty Bank of England Barclays Bank District Council Baxter Healthcare Ltd BDO Stoy Hayward Bechtel Ltd Benteler Automotive UK BEPLAS Marketing BG Telecom BKR Haines Watts BLP Components Ltd bmi british midland BNFL Magnox Generation Bookworld Bovis Construction Ltd Bovis Lend Lease BP Amoco BPB Gypsum BRE Bristol Myers Squibb Ltd British Airways British Airways Digital British Airways Engineering British Airways Recruitment British Energy Generation Ltd British Research and Development Laboratories British Tourist Authority BT Syncordia Digital Economics Ltd Cargill plc Carillion Construction Ltd Carillion Plc Carlsberg & Ergonomics Ltd Central Manchester Healthcare NHS Trust Central Sounds Every Charnwood Dynamics Ltd Chase Manhattan Cheltenham & Gloucester plc Computers Limited Computer Associates plc Conoco (UK) Consignia Cooper Parry Cosworth Technology Ltd Coyne Airways Ltd Croome Goldstar Logistics Crown Security and Security Print Debenhams Plc Defence Evaluation and Research Agency Deutsche Asset Management Ltd Deutsche Verkehrsbank Dixons Dresden Early Years Diagnostic Centre East Midlands International Airport Ltd Elastogran Esso Esso Exxon Group Esso Petroleum Co Ltd Esso Research Centre EWS Systems Ford Motor Company Ltd Fordham Johns Partnership Ltd Four Winds Gateway Industries Gehe UK General Domestic Appliances Ltd Gillette Group PM Grant Thornton Graphic Inline Ltd Group Lotus Ltd Guy's and St Thomas' Hospital Ltd Henry Boot Management Hewlett Packard Ltd Holliday Pigments Ltd Howard Stanley Pratt HS Marston Aerospace Ltd HSBC Bank plc I.B.C. Vehicles Ltd I.B.M. Ltd I.B.M. UK Ltd Ian Holdgate Consulting Engineers ICL ICL Financial Services UK ICW Holdings Ltd IDEO Product Development IMS Schlumberger Industries Information Services International Instant Library Institute of Naval Medicine Human Factors Section Interbrew UK Ltd Interfleet Technology Intermation Ltd Invensys Brook Crompton J C Bamford Excavators Ltd J L French UK Ltd Jaguar Cars Ltd Janssen-Cilag JEB Engineering John Lewis Johnson & Johnson Medical Ltd Johnson Matthey plc Johnson Tidsall JP Morgan Chase Kier Group Plc Kimberly Clark Kleinwort Benson Knowledge Solutions Knox Cropper Kodak Ltd Korn/Ferry International KPMG Kroll Buchler Phillips Kroll Lindquist Avey Kyle Stewart Ltd L.S.C. Laing Construction Laing Limited Lamberet Isotherms Leicestershire LSC/Business Link Llewellyn Construction Ltd Lockheed Martin Ltd Logic Office Furniture London Buses Lorien Lotus (Lintern) Loughborough Students' Union Loughborough University, Business School Loughborough University, Human Sciences & Advanced Technology Institute Loughborough University, International Office Loughborough University, Residential Organisation Lovell Walter Lilley Ltd Lubrizol (GB) Ltd Lubrizol International Laboratories Lucas Aerospace Ltd Lutterworth Press M.B.N.A M.W. Zander Majestic Wine Warehouse Ltd Marconi Marconi Communication Systems Ltd Marks & Spencer plc Mars Electronics International Mars ISI Mecco Merrill Lynch MerseyTravel Michelin Tyres Plc Microsoft Ltd Millbrook Proving Ground Ltd Ministry of Agriculture Fisheries & Food Morgan Stanley Motor Industry Research Association Motorola N.C.R. UK Ltd N.S.B. National History Museum National Power Plc National Radiological Protection Board Nenplas Limited Nestle UK Ltd Nissan European Technology Centre Nissan Motor Manufacturing (UK) Ltd Nokia UK Northern Foods Plc Norwest Holst Norwest Holst Construction Ltd Optichrome Computer Systems Ltd O'Rourke Civil Consulting Group Pannell Kerr Forster Paul Carr Racing Paul Reading & Partners Philips Research Laboratories Pi Research Pilkington Glass Polytec PriceWaterhouseCoopers Pro-Activ Product Design Associates Ltd Prodrive Ltd (UK) Reeves Technologies Remote Marine Systems Renishaw Plc Reuters Ltd Robert Walters Plc Rolls Royce and Associates Roll Serck Controls Ltd Serco Docklands Ltd Shell Global Continents plc Skanska Smart Corporation SmithKline Woodrow Construction Ltd Taylor Woodrow Group Thomas Cook Group Thorworld Industries Thomas (UK) Ltd Tomco Tony Gee and Partners Top Team Europe Power UBS Asset Management UBS Services Volkswagen Group UK Ltd Volkswagen Seat UK Finance Yellow Pages Yorkshire Co-operative







- **Systems Engineering Innovation Centre (SEIC) with BAE SYSTEMS & emda**



# Rolls Royce University Technology Centre



Rolls-Royce



Loughborough  
University





**Ford College on Campus**





The University's mission is built upon employer collaboration

## Consistently highly ranked



- **Winner of THES 'Best Student Experience' for 3 consecutive years (2006, 2007 and 2008)**
- **Winner of THES 'Outstanding Support for Overseas Students' (2007 and 2008)**



# The Sunday Times University of the Year 2008-2009



---

*Survey conducted among  
6,500 students from 97 universities*

---

# We are the PREMIER University for sport

- **BUSA Champions**

- **48 of our students, past and present, competed at the 2008 Beijing Olympics**

- **Our athletes won an impressive 30 medals in the 2006 Commonwealth Games (8<sup>th</sup> as a country!)**

- **Sporting graduates include:**

**Lord Sebastian Coe, Paula Radcliffe, Steve Backley, Dame Tanni Grey-Thompson, Monty Panesar and Clive Woodward**





# THE UNIVERSITY HAS WON SIX QUEEN'S ANNIVERSARY PRIZES

**Awarded for work in areas of  
outstanding international excellence  
which represent a service to the nation**

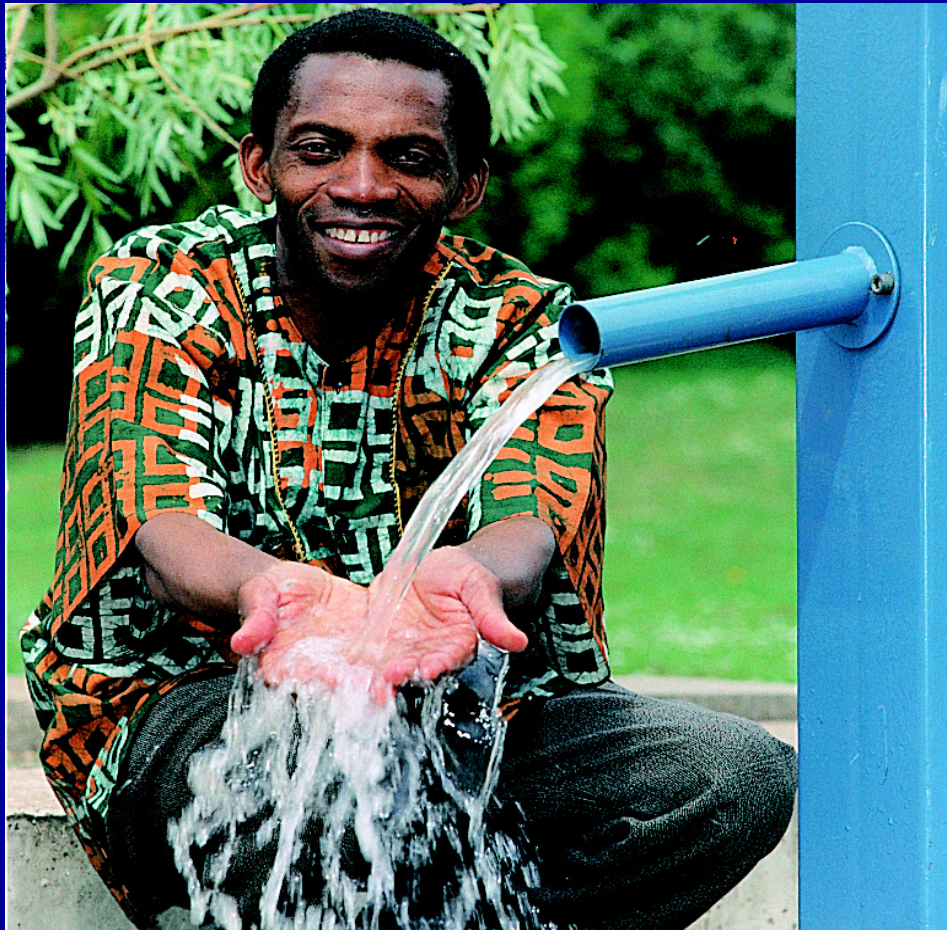


## **Collaboration with the Aerospace and Automotive Industry**

**“An exemplary series of degree, diploma and research programmes for aerospace and automotive employment and commercial needs, attracting student applications on a world-wide basis. A model solution to the needs of the manufacturing industry.”**

***Queen's Anniversary Prize citation, 1994***

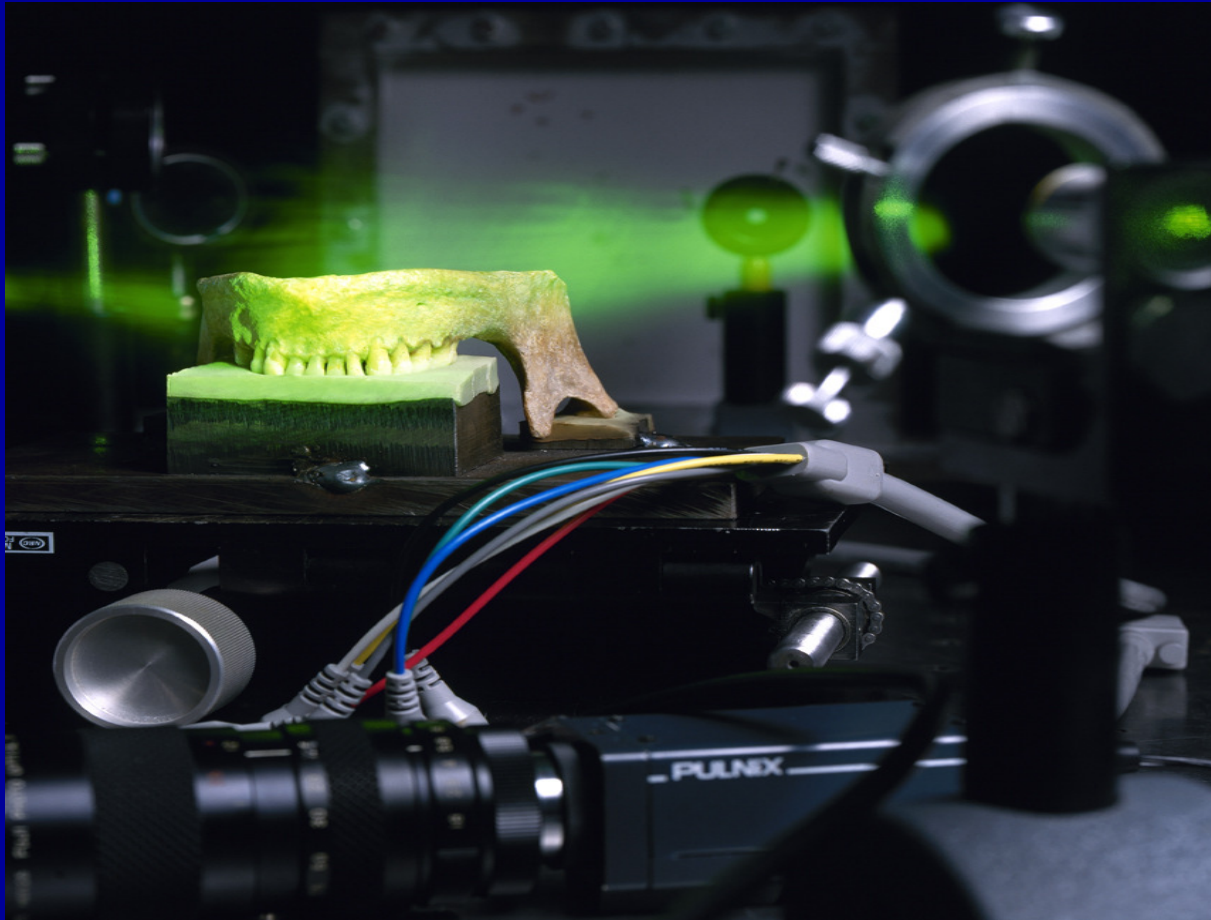




**“The Water, Engineering and Development Centre (WEDC) provides outstanding support for development countries and is internationally recognised as a leader in providing sustainable infrastructure.”**

**Its partnerships with universities, aid agencies, non-governmental organisations and governments transcend academic, institutional and cultural boundaries in pursuit of improving quality of life for those most in need.”**

***Queen's Anniversary Prize citation, 1998***



**“The University has played a pioneering role in developing applications of modern optics and laser technologies to find practical solutions to real world problems. Through its skills and experience in the field over many years, the University has become a national resource, internationally respected.”**

***Queen's Anniversary Prize citation, 2000***





**“The University has an international reputation for its pioneering research and education in sports science.”**

**“Its pivotal position is enhanced by strengths in coaching, elite performance and wide-ranging participation, and is reinforced with an extensive network of partnerships with industrial companies, external agencies and major sports bodies, many located on campus.”**  
*Queen’s Anniversary Prize citation, 2002*

**“The University’s contribution to social policy through high-quality research, with a record of relevance, practical orientation and innovation, is an outstanding example of how excellence in research can be applied with wide impact and benefit. It has influenced policy makers and legislators in the UK resulting in better targeted policy, in particular as it affects neglected and disadvantaged groups.”**



*Queen's  
Anniversary  
Prize citation  
2005*







**The University's applied research into vehicle safety and driver sleepiness has made an outstanding contribution to international policies aimed at reducing deaths from road traffic accidents.**

**The work has led directly to improved in- and out-of-car safety measures, better road and motorway design and new accident data collection processes. It has uniquely and specifically highlighted the problem of driver sleepiness and had a recognised impact on this major cause of road accidents."**



***Queen's Anniversary Prize citation, 2007***

**Expansion by 50% occurred in 2003  
and is continuing today**



# Systems Engineering Innovation Centre - a £60m initiative with BAESYSTEMS



**ENJOY YOUR  
CONFERENCE STAY  
WITH US!**