



Strengthening the Pipeline: ICE Academic Engagement

Elena Rinaldi CEng MICE Academic Partnership Manager

The aspiration

Every civil engineering student begins building professional practices and networks during their university studies.

Graduates in civil engineering consistently find employment within the profession, contributing to vital infrastructure and sustainable development.

All civil engineers—including academics—uphold a recognized standard of competence and professionalism.

The aspiration

Every civil engineering student begins building professional practices and networks during their university studies.

ICE student membership places students on a structured path of support, guidance, and opportunity.

Graduates in civil engineering consistently find employment within the profession, contributing to vital infrastructure and sustainable development.

A clear professional development pathway enhances student employability and prepares them for long-term career success.

All civil engineers—including academics—uphold a recognized standard of competence and professionalism.

Graduates enter structured training programs that lead to professional qualification in a timely and supported manner. Academics hold a professional qualification.

The Institution of Civil Engineers today

97,000 members worldwide

22,000 student members worldwide

14,000 student members in UK

Qualifications:

EngTech/IEng/CEng MICE

Civil Engineer - typical route: Civil Engineering degree and experience in civil engineering

Infrastructure Engineer - typical route: Civil Engineering degree and exp in the wider infrastructure sector
(digital, sustainability...)


The End Point Assessment organization for civil engineers and technician apprentices: L3,4

1% annual growth for the past 10 years



What is civil engineering ▾ Your career ▾ Areas of interest ▾ Events ▾ News, views & insights ▾ About us ▾ Get involved ▾ [Join ICE](#)

Home > Events > Professional qualification training > **Infrastructure engineer: start your journey**

 Support for Members (IEng & CEng)

Infrastructure engineer: start your journey

Event organised by ICE

09 September 2025
12:00 - 13:00 BST (GMT+1)
Online

[Add to Calendar](#)

Free [Book now >](#)

Overview

Showcase your competence and commitment as a professionally qualified infrastructure engineer with the ICE.

Join us to learn all about **Infrastructure engineer (EngTech, IEng or CEng MICE)**

Who is this for? If you are an engineer or technician working in infrastructure and specialise in a discipline other than civil engineering, these qualifications are the ideal option for you. You could become an Infrastructure Engineering Technician, Incorporated or Chartered Infrastructure Engineers (EngTech MICE, IEng MICE or CEng MICE).

When to attend? When you are starting out, or if you are already experienced. If you are supporting, supervising or mentoring potential candidates.

Why attend? To find out who can apply and the application routes available.

How long is the session? 60 minutes

For more information please contact:
Ashleigh Mckenzie
g: memsupp.coordinator@ice.org.uk

Topics:
[Professional Development](#)

Find out more

9 September

12:00 – 13:00 BST (GMT+1)

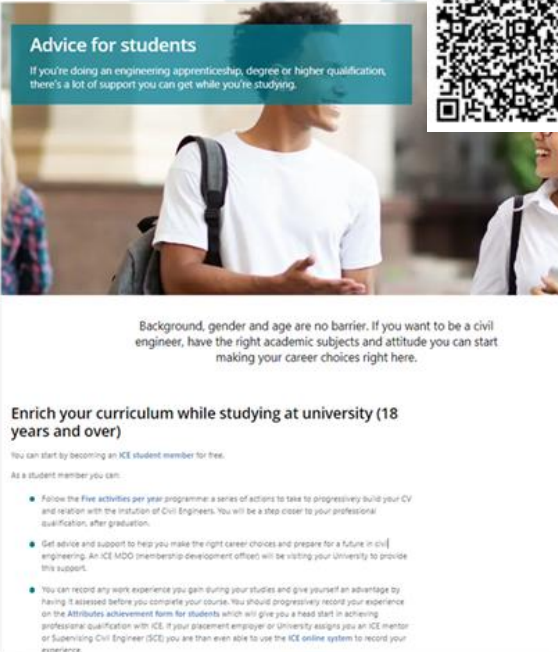
Book your place:



Support to civil engineering students



- ICE promotes FREE student membership for all civil engineering students (undergraduates, post-graduate, apprentices)
- Regular visit(s) by ICE staff (UK and overseas campuses)
- Global online presentations on membership, ICE, qualifications

A screenshot of a webpage titled 'Advice for students'. The page features a teal header with the title and a sub-header. Below the header is a photograph of a young man with a backpack talking to a woman. The main text on the page discusses the benefits of ICE membership for students, including curriculum enrichment and career advice. A bulleted list provides specific steps for becoming a student member.

Advice for students
If you're doing an engineering apprenticeship, degree or higher qualification, there's a lot of support you can get while you're studying.

Background, gender and age are no barrier. If you want to be a civil engineer, have the right academic subjects and attitude you can start making your career choices right here.

Enrich your curriculum while studying at university (18 years and over)

You can start by becoming an ICE student member for free.

As a student member you can:

- Follow the **Five activities per year programme**: a series of actions to take to progressively build your CV and relation with the Institution of Civil Engineers. You will be a step closer to your professional qualification, after graduation.
- Get advice and support to help you make the right career choices and prepare for a future in civil engineering. An ICE MDO membership development officer will be visiting your University to provide this support.
- You can record any work experience you gain during your studies and give yourself an advantage by having it assessed before you complete your course. You should progressively record your experience on the **Attributes achievement form for students** which will give you a head start in achieving professional qualification with ICE. If your placement employer or University assigns you an ICE mentor or Supervising Civil Engineer (SCE) you are then even able to use the ICE online system to record your experience.

Support to civil engineering students

- Pre19 promotion (CityZen, STEM ambassador, virtual work experience..)
- Curriculum enrichment programme for students:
 - **ICE Universities series :**
 - monthly Career talks
 - Bitesize on sustainability, HSW, digital literacy, ethics
- Early start of professional training: work experience records
- **NEW: Careers app**

ice
Institution of Civil Engineers

Attribute Achievement Form for students

Record your evidence here while at University.
You will be able to transfer it to your Initial Professional Development ([IPD online](#)) records once you have an active Training Agreement with an approved employer or are registered on a Training Agreement with the Mentor Supported Training and have [ICE MentorSCE](#) assigned (this often happens once you are in full time employment).

Your name	<input type="text"/>
Your university	<input type="text"/>
Course	<input type="text"/>
ICE membership number	<input type="text"/>

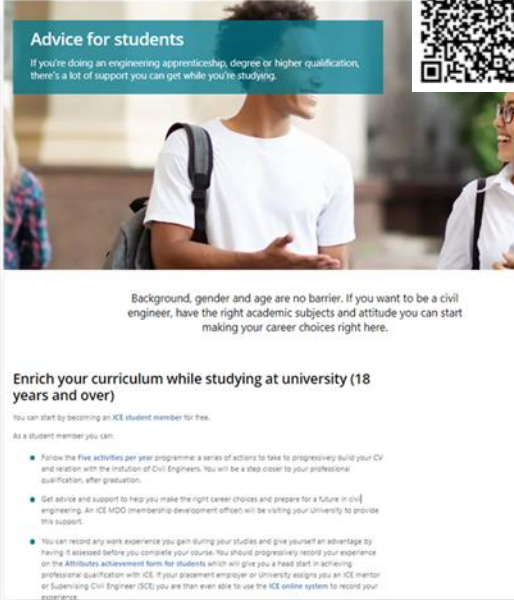
How to use this form

The form lists the seven ICE Attributes, which are the standards of professional competence and commitment expected of engineers working in the field.

→ Title
→ Guidance
→ Write here

Focus of ICE support to students

- Active support to pipeline into industry
- Foster a sense of belonging to the civil engineering community
- Assist civil engineering department in enriching students' experience and curriculum
- Ensure students understand the importance of becoming professionally qualified while they are at your universities



Advice for students
If you're doing an engineering apprenticeship, degree or higher qualification, there's a lot of support you can get while you're studying.

Background, gender and age are no barrier. If you want to be a civil engineer, have the right academic subjects and attitude you can start making your career choices right here.

Enrich your curriculum while studying at university (18 years and over)

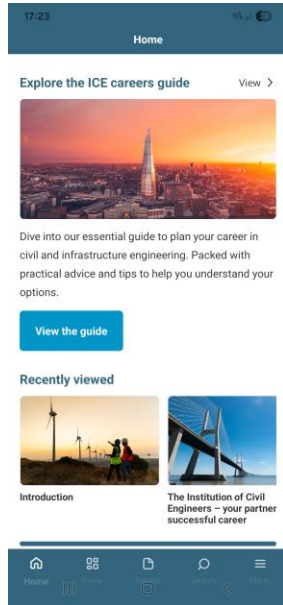
You can start by becoming an ICE student member for free.

As a student member you can:

- Follow the Five activities per year programme: a series of actions to take to progressively build your CV and relation with the Institution of Civil Engineers. You will be a step closer to your professional qualification, after graduation.
- Get advice and support to help you make the right career choices and prepare for a future in civil engineering. An ICE MDD (membership development officer) will be visiting your University to provide this support.
- You can record any work experience you gain during your studies and give yourself an advantage by having it assessed before you complete your course. You should progressively record your experience on the Attributes Achievement Form for students which will give you a head start in achieving professional qualification with ICE. If your placement employer or University assigns you an ICE mentor or Supervising Civil Engineer (SCE) you are then even able to use the ICE online system to record your experience.

What else? Elena.Rinaldi@ice.org.uk

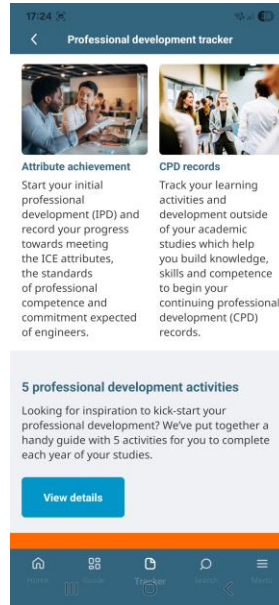
A new careers app for your students



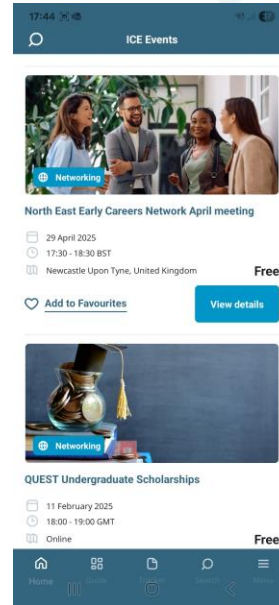
ICE Careers app



Careers guide



Development tracker



ICE events... and more

Support for civil engineering departments



ICE academic membership

- Termly online membership application support for academics
- Visits and surgeries
- Membership application guidance course with academic mentors
- Free student membership for PhD students

Industry contact

- Database of your alumni: over 97,000 members
- IAB participation

The screenshot shows a webpage for an event titled "ICE Membership for Academics – start your journey". The page is organized into several sections: a header with the event title and a "Book now" button, an "Overview" section with detailed text, and a "For more information please contact:" section with the name "Ashleigh Mckenzie" and email "memsupp.coordinator@ice.org.uk". There is also a "Topics" section with "Professional Development" listed.

Support for Members (Eng & CEng)

ICE Membership for Academics – start your journey

Event organised by ICE

Add to Calendar

Free [Book now >](#)

Overview

Who is this for? Anyone working in academia, or whose job revolves around research, with an academic qualification in civil or infrastructure engineering or related subjects, and who is interested in ICE professional qualifications.

When to attend? When you are considering applying for an ICE professional qualification.

Why attend? To learn about the possible application routes to IEng MICE and CEng MICE when working in academia and research.

How long is the session? 45mins

What will it contain? Information on the application route to ICE professional qualification, and the aspects of your academic base and professional experience which are considered when making an application, the next steps and where to go for further information.

Look here for useful information:

Unsure if your academic base is suitable – look here [Accredited course search](#) | [Institution of Civil Engineers \(ICE\)](#), unsure if you have the experience – look here [Attributes for professionally qualified membership](#) | [Institution of Civil Engineers \(ICE\)](#). Look here for suggested ICE membership grades suitable for those in research and academia [ICE Academic Partnerships](#) | [Institution of Civil Engineers \(ICE\)](#)

For more information please contact:

Ashleigh Mckenzie
g: memsupp.coordinator@ice.org.uk

Topics:

- Professional Development

17 September
13:30 – 14:00 BST (GMT+1)

Book your place:

Support for civil engineering departments

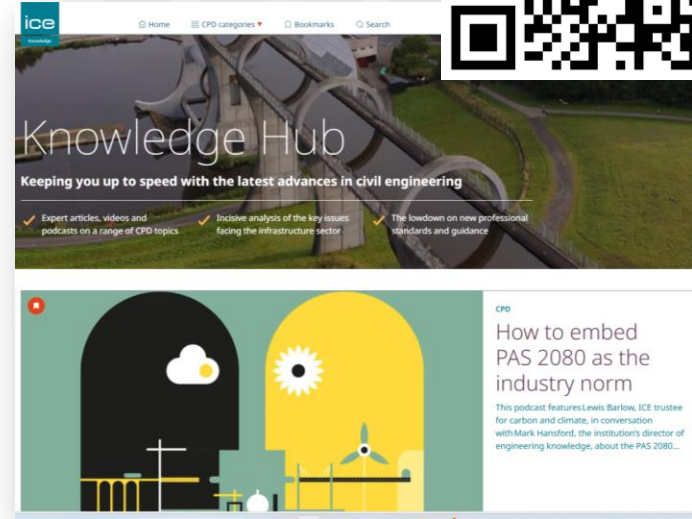


CPD for academics

- Resources on dedicated pages on ICE website
- Newsletters tailored to specific interests
- Industry updates
- Knowledge sharing/ involvement / input

Support to research

- Opportunity for involvement with knowledge groups
- Research and development funds.



NEW: Open/ Career days material in marketing hub



Support for apprenticeships schemes

- ICE annual conference: 14th of November in OGGs (London HQ)
- Changes to EPA delivery: two session/ month (2026)
- Update: IEng via integrated apprenticeships, still tbc by EngC
- Need help?
Richard.Davis@ice.org.uk

The screenshot shows the ICE website's 'Apprenticeships' page. The header includes the ICE logo and navigation links: 'What is civil engineering', 'Your career', 'Areas of interest', 'Events', 'News, views & insights', and 'About us'. The main heading is 'Apprenticeships' with a sub-heading 'How to become a professionally qualified engineer > Apprenticeships'. A large image shows a person wearing safety glasses. Below the image, text states: 'Apprenticeships in the UK are a recognised pathway to achieving professional excellence. They allow individuals to earn while they learn and equip employers with a skilled workforce.' There are three columns of content: 'Apprentices' (describing the UK pathway), 'Employers' (describing ICE support), and 'Training provide' (describing ICE's role). A 'Training providers' section on the right highlights that experienced teams offer advice and support. At the bottom right, there is a dropdown menu for regional information, with 'England', 'Scotland', and 'Other regions' visible.

Mutual support

What can we do to help?

Contact

Elena.Rinaldi@ice.org.uk

Contact your local team



What can you do to support ICE?

- Promote FREE student membership
- Promote CPD practices
 - 5 activities per year
 - ICE Universities series
 - Follow our Student Instagram



[@ice_universities](https://www.instagram.com/ice_universities)

Focus next year

- Active support to industry advisory/ liaisons boards

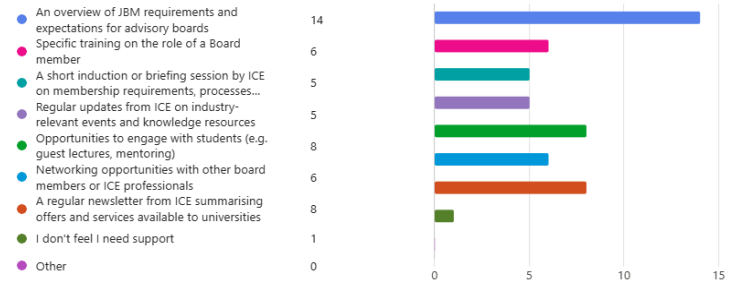
- JBM requirements refresher
- Newsletter
- Online community?

- Can you help us reach more IAB members for the survey?

- Anything else?

Elena.Rinaldi@ice.org.uk

6. Which of the following activities or types of support might help you in your role on the board? Select as many as applicable



Academic input into Survey of Industry Advisory Board / Panel members



Help us support your Industry
advisory/Liaison Board

- <https://forms.office.com/e/HnfVY2kjgg>